



protect. teach. love.™

Product Manual
Manuel d'utilisation
Producthandleiding
Manual del producto
Manuale del prodotto
Gerbrauchsanleitung

PAL19-16768

Simply Clean™ Automatic Litter Box

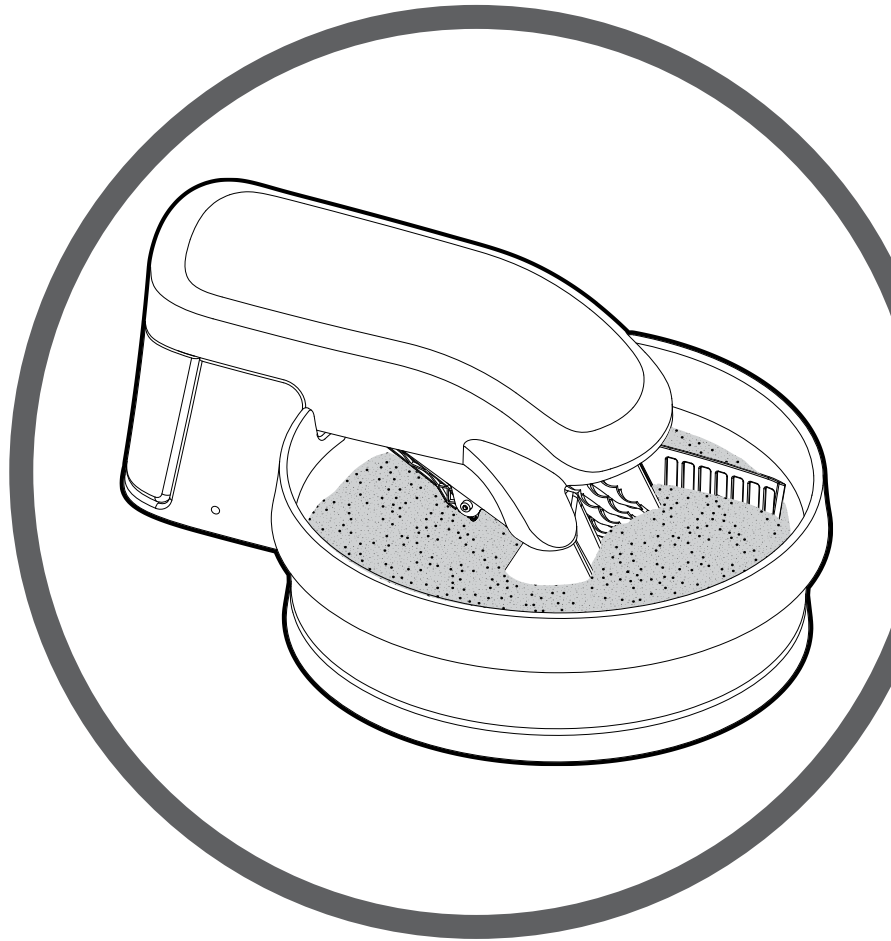
Bac à litière automatique Simply Clean™

Simply Clean™ automatische kattenback

Simply Clean™ bandeja higiénica automática

Sistema Lettieria automatica Simply Clean™

Automatische Katzenttoilette Simply Clean™



Please read this entire Product Manual before beginning.
Veuillez lire ce manuel d'utilisation dans son intégralité avant de commencer.
Gelieve deze producthandleiding volledig door te lezen voordat u begint.
Por favor, lea detenidamente este manual del producto antes de empezar.
Prima di iniziare, leggere per intero il manuale del prodotto.
Bitte vor Gebrauch diese Gebrauchsanleitung durchlesen.

Welcome

You and your pet were made for each other. Our aim is to help you have the best companionship and the most memorable moments together. Your new Simply Clean™ Automatic Litter Box rotates at a rate of once every 1½ hours, continuously cleaning the litter so that you don't have to.

We know that safe pets make happy owners. Before getting started, please take a moment to read through the important safety information. If you have any questions, please don't hesitate to contact us.

Hereinafter Radio Systems Corporation, Radio Systems PetSafe Europe Ltd., Radio Systems Australia Pty Ltd. and any other affiliate or Brand of Radio Systems Corporation may be referred to collectively as "We" or "Us".

IMPORTANT SAFETY INFORMATION

Explanation of Attention Words and Symbols used in this guide

⚠ WARNING

WARNING indicates a hazardous situation which, if not avoided, could result in death or serious injury.

⚠ CAUTION

CAUTION, used with the safety alert symbol, indicates a hazardous situation which, if not avoided, could result in minor or moderate injury.

CAUTION

CAUTION, used without the safety alert symbol, indicates a hazardous situation which, if not avoided, could result in harm to your pet.

NOTICE

NOTICE is used to address safe use practices not related to personal injury.

⚠ WARNING

When using electric appliances, basic precautions should always be followed to reduce the risk of fire, electric shock and/or injury including the following:

- To reduce risk of injury, close supervision is necessary when this product is used near children.
- Read all the instructions before using this product. Save these instructions for future reference.
- Do not submerge the litter box in water or other liquids.
- To protect against electric shock, do not place the unit, power adaptor or plug in water or other liquids. If the plug of the device gets wet, turn off the electricity to that outlet. Do not attempt to unplug.
- Do not place or store the unit where it can fall or be pulled into a tub or sink.
- Do not pull on the power adaptor to remove the plug from the outlet. To unplug, grasp the power adaptor, not the power cord.
- Do not use accessories or attachments that are not recommended by the manufacturer as they may cause fire, electric shock or injury.
- Do not operate if the unit has a damaged power adaptor or plug, or if it is malfunctioning or has been damaged. Call the Customer Care Centre immediately for further instructions.
- Pregnant women, babies, small children and immune-deficient individuals should avoid contact with cat litter waste. Cat's waste may contain toxoplasmosis bacteria that can be harmful to these individuals.
- Packaging material is not a toy. Keep away from children and pets.
- Keep plastic waste bags away from babies and small children. Do not use in cribs, beds, carriages or play pens. The thin film may cling to the nose and mouth and prevent breathing.
- This is not a toy. This product is a precision-operated appliance. Do not allow small children to play with, in or around this device.
- Wash your hands after handling used cat litter.

⚠ CAUTION

- Do not contact moving parts.
- Do not allow anything to rest on the power cord. Do not plug in power adaptor in an area where people or animals may walk or trip on cord.
- Always unplug the unit when not in use, before putting on or taking off parts and before cleaning.
- Do not disassemble the unit while plugged in.

CAUTION

- DO NOT ATTEMPT TO USE THIS PRODUCT FOR ANY OTHER PURPOSE. This product is designed for use with cats only. The litter box is intended solely for the safe elimination of cat waste. This device is not intended to harm, injure or provoke. Using this product in a way that is not intended could result in violation of federal, state or local laws.
- Adult supervision is recommended during your cat's initial introduction.
- If your kitten is under 6 months of age, leave the unit UNPLUGGED and scoop waste until kitten is 6 months old.
- Not intended for use by handicapped, incapacitated or very old cats that might experience difficulty in entering or leaving the litter box.
- PetSafe™ Simply Clean™ Automatic Litter Box should be used with healthy cats. We recommend that you take your cat to a veterinarian before using the litter box if he or she is not in good health.

NOTICE

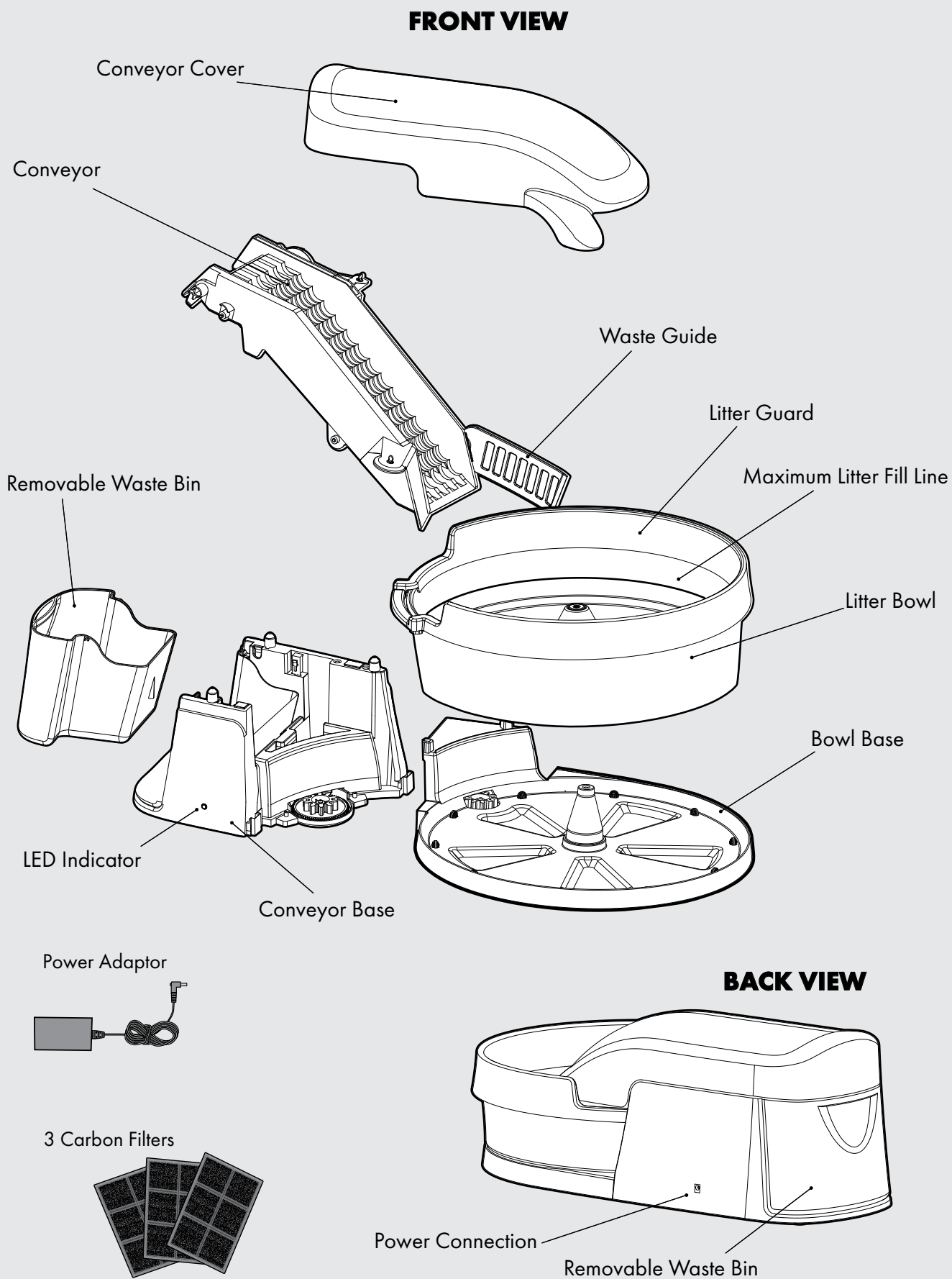
- Do not use outdoors. FOR INDOOR HOUSEHOLD USE ONLY.
- Remove all packaging material before connecting the power adaptor.
- This product should be placed on a level surface.
- ONLY USE PREMIUM CLUMPING, CLAY CAT LITTER. USING A DIFFERENT TYPE CAN CAUSE THE LITTER BOX TO MALFUNCTION.
- You must maintain the litter level at the fill line or the litter box may not operate properly.
- Best suited for cats 7 kg or less.

SAVE THESE INSTRUCTIONS

What's Covered

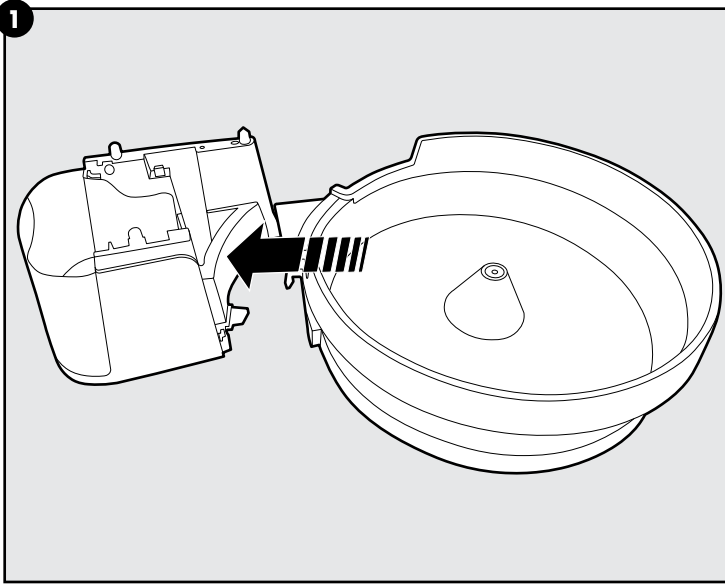
| | |
|---|----|
| In the Box..... | 4 |
| Start Here..... | 5 |
| Acclimating Your Cat to the Litter Box..... | 7 |
| Waste Removal..... | 8 |
| Cleaning..... | 8 |
| Reassembly..... | 9 |
| Testing the Litter Box..... | 10 |
| Frequently Asked Questions..... | 10 |
| Troubleshooting..... | 11 |
| Warranty..... | 12 |
| Important Recycling Advice..... | 12 |
| Compliance..... | 13 |
| Terms of Use and Limitation of Liability..... | 13 |

In the Box

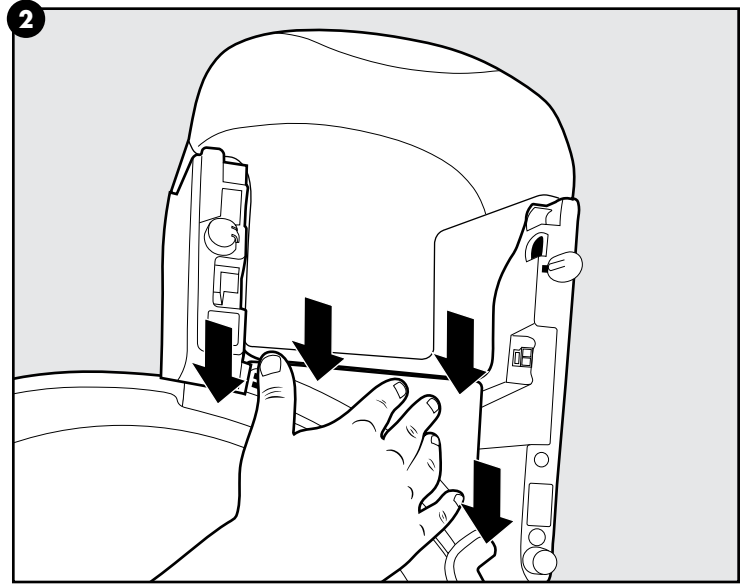


Start Here

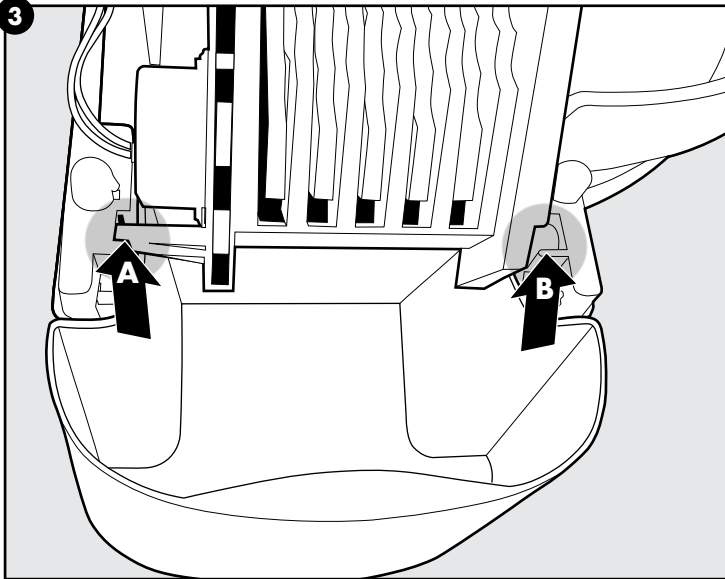
Note: The litter guard and conveyor cover must be installed correctly for the unit to operate properly. If not installed correctly, the litter guard can lift up the conveyor cover and cause the unit to not work properly. Safety features require that these pieces are installed correctly so the moving conveyor is not exposed.



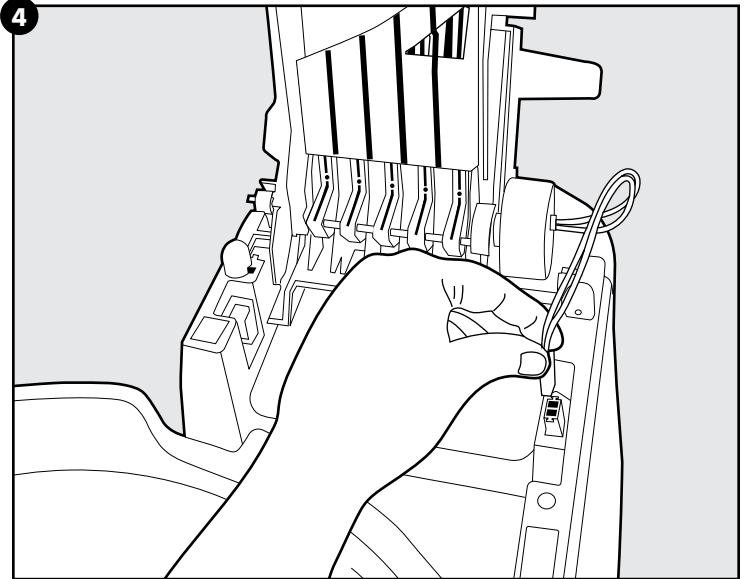
1. Remove the Simply Clean™ unit and components from packaging. Place the litter box on a firm, flat surface. Attach the bowl base (with the bowl and litter guard attached) to the conveyor base by lowering the bowl base onto the open end of the conveyor base.



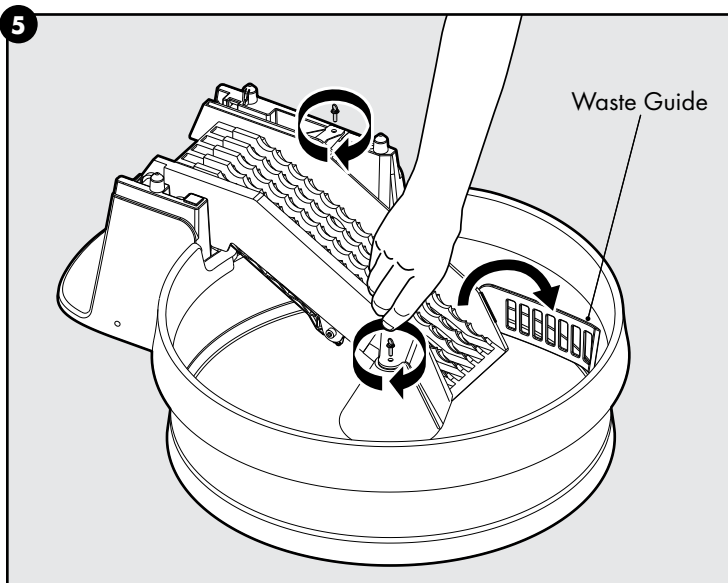
2. Press down firmly on the bowl base to ensure that it is snapped into place.



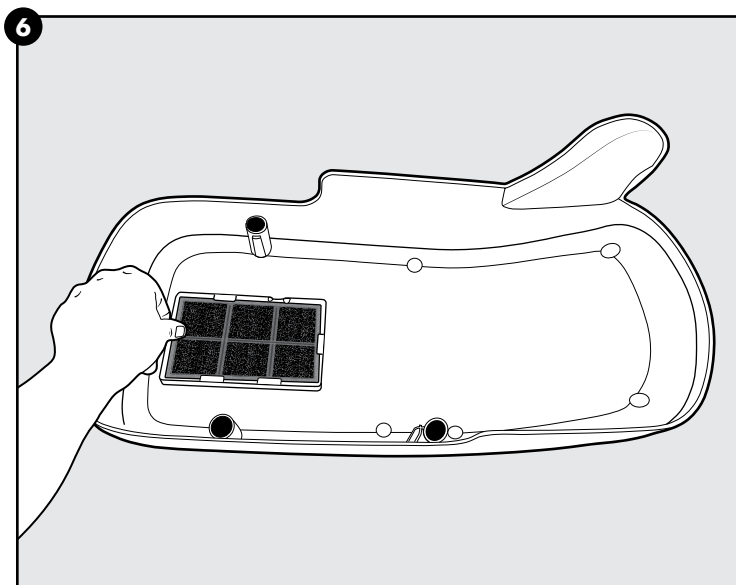
3. Next, install the conveyor by sliding the long post at the top (**A**) into the hole on the conveyor base. Then insert the short post (**B**) on the opposite side into the hole in the base by pressing it down into the hole with the L-shaped piece pointing down.



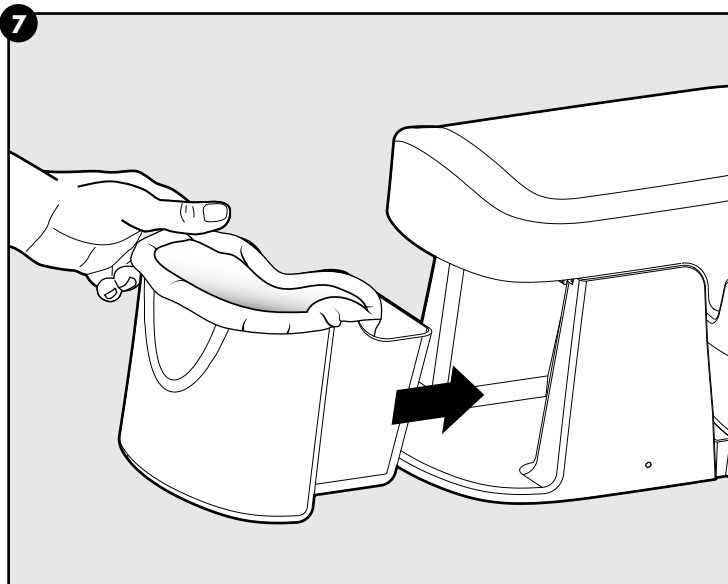
4. Leave the conveyor in the upright position, and plug in the motor. The motor plug is at the end of the red wire, and it clips into the conveyor base.



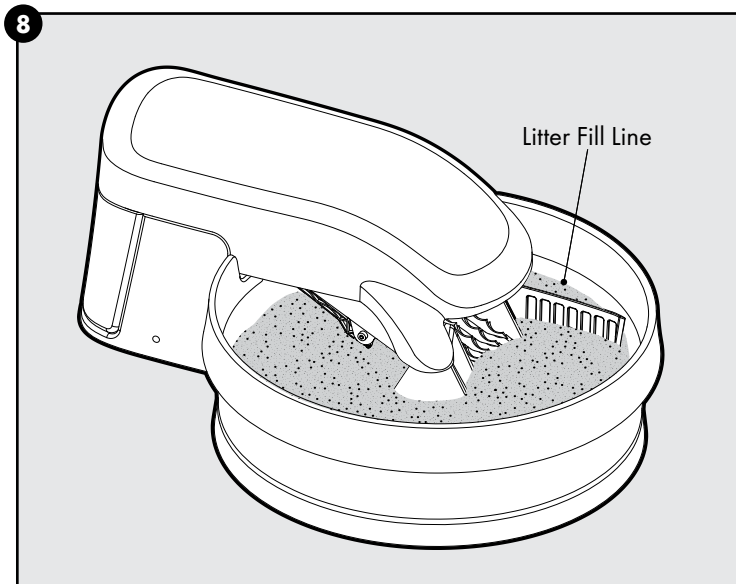
5. Lower the conveyor and tighten the thumb screws, then flip the waste guide down into place.



6. Place one carbon filter into the brackets on the inside of the conveyor cover. The black side of the filter should face outward. The carbon filter will help reduce odours from the waste bin area. Place the conveyor cover over the conveyor, making sure it is fully in place.



7. Use a plastic bag to line the waste bin. Insert the waste bin into the back of the litter box, making sure it is aligned and fully inserted into the unit. For additional help to minimise odours, add a small layer of clean litter and baking soda to the plastic waste bag or waste bin before placing it in the litter box.

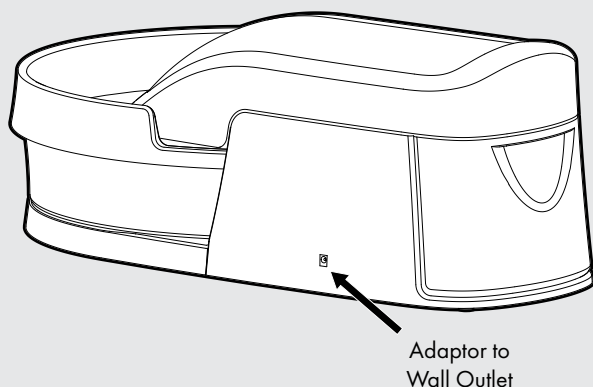


8. Fill the litter bowl only with clumping, scoopable, clay cat litter to the maximum litter fill line. **Be sure to fill the bowl to the fill line, as leaving the box too empty or too full can cause issues.**

Note: The conveyor cover and waste bin must be aligned correctly and fully inserted in the unit to turn on the green indicator light. The green light must be on to supply power for the litter box to operate properly. If the light is blinking blue, then either the waste bin or conveyor cover are not in place.

NOTICE Only use premium clumping, clay cat litter. Using a different type can cause the litter box to malfunction. Maintain the litter level at the fill line or the litter box may not operate properly.

CAUTION Do not allow anything to rest on the power cord. Do not plug in power adaptor in an area where people or animals may walk or trip on cord.



9. Insert the end of the power adaptor into the power connection on the back of the litter box. Plug it into a standard mains power outlet. The green light on the litter box should illuminate. Your litter box is ready for use.

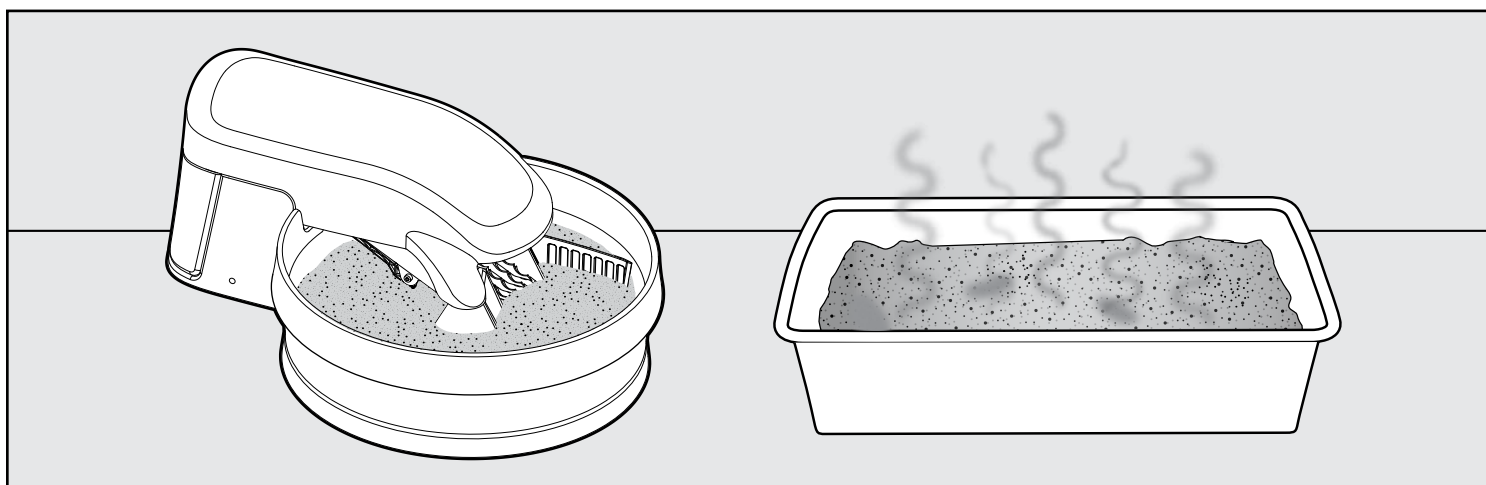
LED Indicator

| LIGHT COLOR AND FUNCTION | WHAT IT MEANS |
|---------------------------------|--|
| Solid Green | The unit is fully operational. |
| Blinking Blue | The waste bin or conveyor cover are not fully in place. |
| Solid Red | There is an issue with the conveyor motor. Unplug the unit and plug it back in. If the light turns red again after 10 minutes, please call our Customer Care Centre. |
| Blinking Red | There is an issue with the bowl motor. Unplug the unit and plug it back in. If the light blinks red again after 10 minutes, please call our Customer Care Centre. |
| Alternating Red and Blue | There is an issue with both the conveyor and bowl motors. Please unplug the unit, and call our Customer Care Centre. |

Acclimating Your Cat to the Litter Box

Most cats easily adapt to the Simply Clean™ Automatic Litter Box. Some cats may require an adjustment period to get used to their new litter box. Here are a few tips to help with the transition:

1. Place the new Simply Clean™ Automatic Litter Box next to your cat's current litter box. Allow your cat to have access to both the old and new litter boxes for at least a week. This time may vary depending on the temperament of your cat.
2. Stop cleaning your cat's old litter box, allowing it to remain dirty. Cats prefer a clean litter box, and this will make the new litter box more appealing. Your cat should start using their new Simply Clean™ Automatic Litter Box.

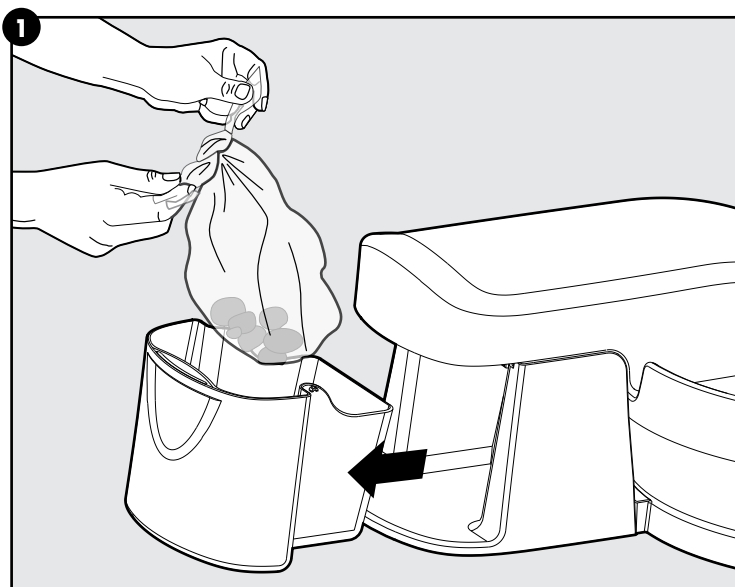


Note: Although the Simply Clean™ Automatic Litter Box is quiet while running, you may want to leave it unplugged for a few days so your cat can get used to the new box without any distractions. If you leave it unplugged, you need to manually scoop waste from the litter box until your cat is fully transitioned.

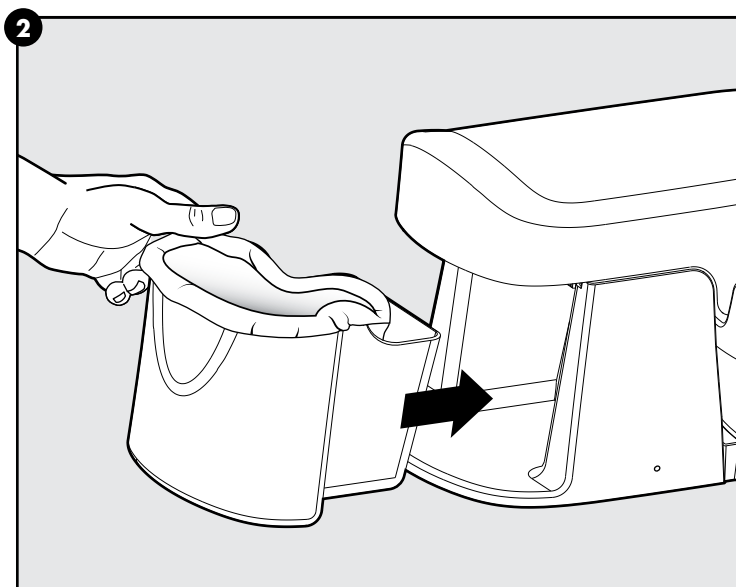
3. Once your cat has transitioned to the new litter box, just plug it in and remove the old litter box from the area.

Waste Removal

We recommend disposing of any waste at least every other day, or more if you have more than one cat.



1. Remove the waste bin from the litter box. If using a plastic waste bag, tie the bag closed. Discard the waste material in the rubbish bin.



2. If desired, place a clean plastic waste bag in the waste bin. Replace the waste bin into the back of the litter box, ensuring it is aligned correctly and fully inserted in the unit.

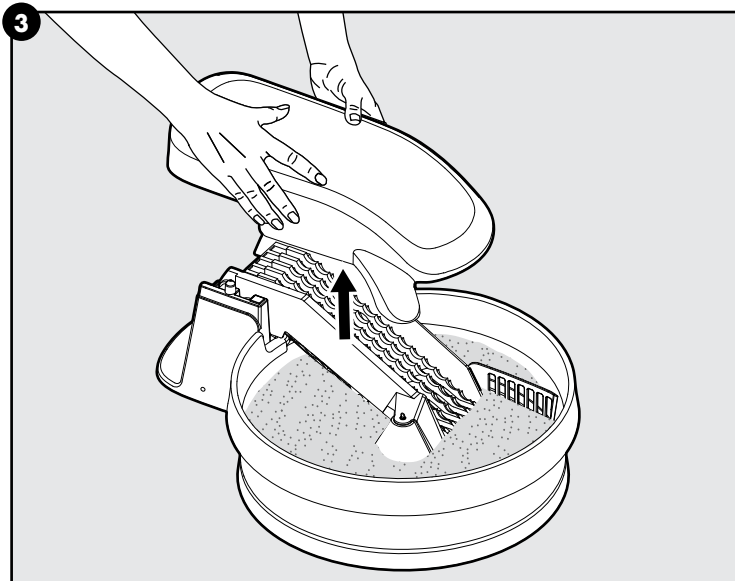
⚠ WARNING

Pregnant women, babies, small children and immune-deficient individuals should avoid contact with cat litter waste. Cat's waste may contain toxoplasmosis bacteria that can be harmful to these individuals. Wash your hands after handling used cat litter and waste bin.

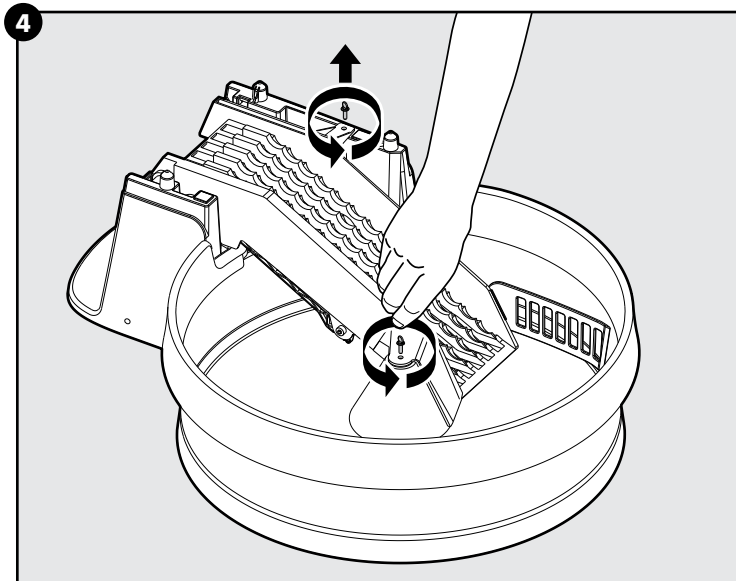
Cleaning

Routine general cleaning is recommended and necessary to keep the Simply Clean™ Automatic Litter Box operating at a high level of performance. We recommend cleaning the system every two weeks for a single-cat household.

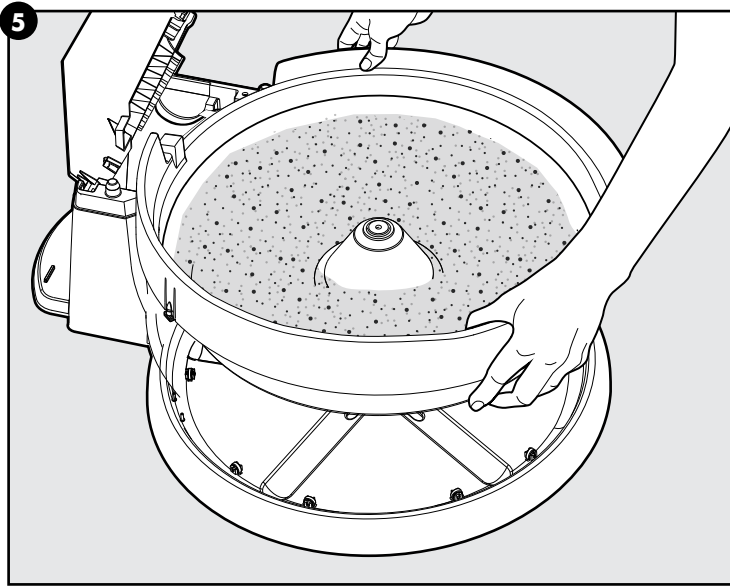
1. Unplug the power adaptor from the mains power outlet, and disconnect it from the litter box.
2. Remove the waste bin and dispose of any waste.



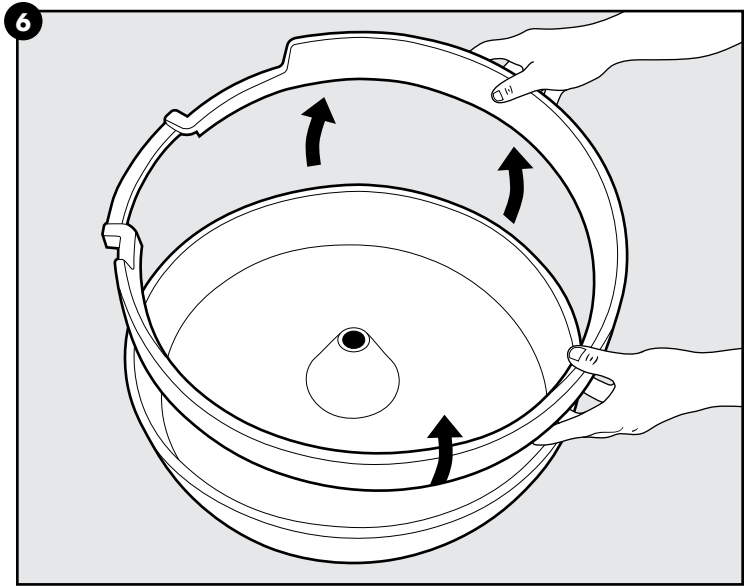
3. Remove the conveyor cover by lifting up on the sides, and dispose of the carbon filter (if needed).



4. Remove the thumb screws from the center of the litter bowl and top of the conveyor. Lift the conveyor to its upright position.



5. Lift up the litter bowl to remove it, and dispose of the used litter.



6. If further cleaning is needed, remove the litter guard. The litter bowl, litter guard and waste bin can be submerged in water and washed with mild soap.

7. Rinse and thoroughly dry all parts before reassembling the unit. If needed, carefully clean the conveyor using only a damp cloth or sponge.

⚠ WARNING

Do not submerge or expose the electrical components to water or cleaning solutions. DO NOT submerge or expose the base unit, conveyor or any electrical components to water or cleaning solutions. DO NOT use bleach or chemicals to clean as they can act as a repellent to your cat.

⚠ CAUTION

Always unplug the unit when not in use, before putting on or taking off parts and before cleaning.

Reassembly

1. Replace the litter bowl with litter guard on the base unit.
2. Follow steps 5 – 9 in the “Start Here” section.

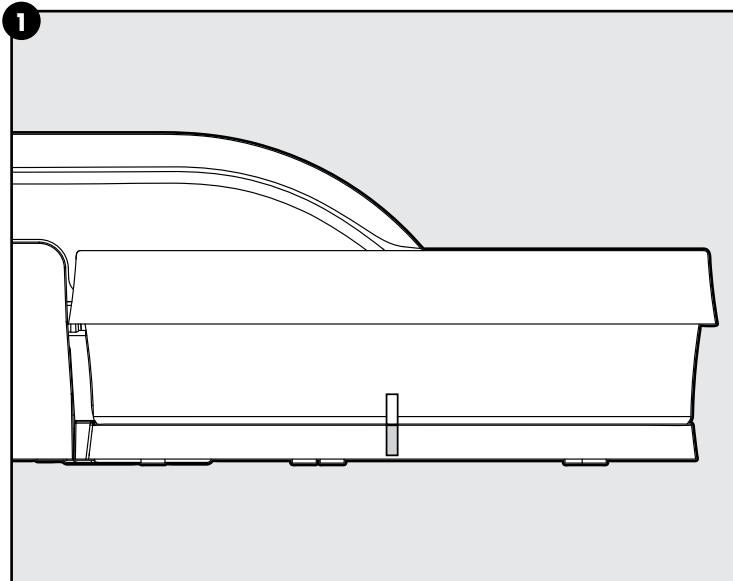
Note: The conveyor cover and waste bin must be aligned correctly and fully inserted in the unit to turn on the green indicator light. The green light must be on for the litter box to operate properly. If the light is blinking blue, then either the waste bin or conveyor cover are not in place.

NOTICE

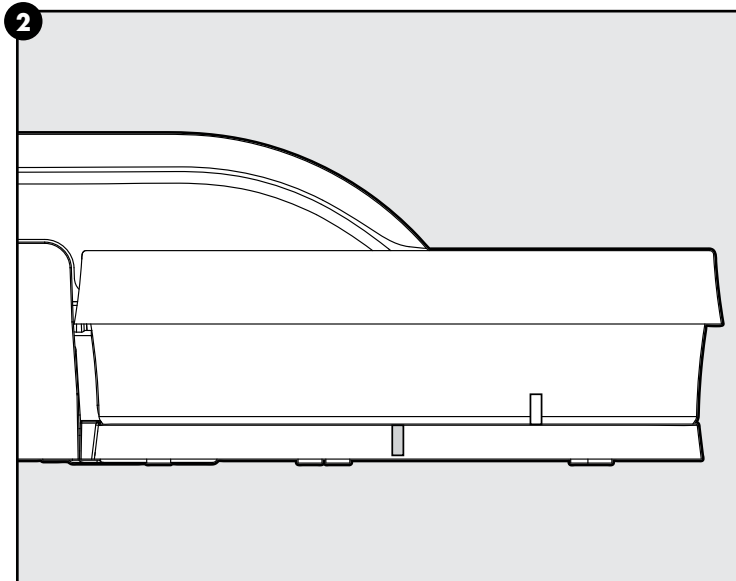
Only use premium clumping, clay cat litter. Using a different type can cause the litter box to malfunction. Maintain the litter level at the fill line or the litter box may not operate properly.

Testing the Litter Box

The Simply Clean™ Automatic Litter Box cleans for 30 minutes then stops for 30 minutes, making one full rotation every 1½ hours. The bowl moves very slowly and is whisper-quiet, so your cat will not notice the movement.



1. To test if the litter box is rotating properly, place one piece of adhesive tape on the base of the unit and one piece of tape on the bowl of the unit.



2. After several minutes, the two pieces of tape should be several inches apart. Remove the tape when finished testing.

FREQUENTLY ASKED QUESTIONS

| QUESTIONS | ANSWERS |
|---|--|
| Will the continuous movement of the Simply Clean™ Automatic Litter Box scare my cat? | No. The Simply Clean™ Automatic Litter Box has no exposed moving parts, and the litter bowl rotates at a rate of one rotation every 1½ hours. It is whisper-quiet and will not startle or disturb your cat. |
| Does the Simply Clean™ Automatic Litter Box reduce odour? | Yes. Since waste is continuously sifted and moved to the covered waste bin, you will notice a considerable reduction in odour compared to other litter boxes. To reduce odours even more, you can add some fresh litter and baking soda to the bottom of the lined or unlined waste bin. The carbon filter in the conveyor hood will also help to reduce odours in the waste bin area. |
| Do I need to purchase a special brand of cat litter? | No. Any clumping, scoopable, clay cat litter will work. |
| Do I need to purchase special waste bin bags? | No. You can use any small plastic rubbish bag or no bag at all. If you don't use a bag, you might need to occasionally wash the waste bin. |
| How often do I need to empty the waste bin? | Depending on the level of use and how many cats you have, we recommend that you empty the waste bin when it is nearly full, or every other day, to better reduce odours. |
| Will I use more litter than my traditional litter box? | No. The Simply Clean™ Automatic Litter Box uses less litter than most traditional litter boxes, since there is no daily scooping and refilling. |

TROUBLESHOOTING

LED Indicator

| LIGHT COLOR AND FUNCTION | WHAT IT MEANS |
|---------------------------------|--|
| Solid Green | The unit is fully operational. |
| Blinking Blue | The waste trap or conveyor cover are not fully in place. |
| Solid Red | There is an issue with the conveyor motor. Unplug the unit and plug it back in. If the light turns red again after 10 minutes, please call our Customer Care Centre. |
| Blinking Red | There is an issue with the bowl motor. Unplug the unit and plug it back in. If the light blinks red again after 10 minutes, please call our Customer Care Centre. |
| Alternating Red and Blue | There is an issue with both the conveyor and bowl motors. Please unplug the unit, and call our Customer Care Centre. |

| PROBLEM | SOLUTION |
|---|--|
| Waste is breaking into small pieces and falling through the spaces in conveyor | <ul style="list-style-type: none"> Make sure you are only using clumping, scoopable, clay cat litter. Make sure to keep bowl filled at or below the maximum litter level fill line for best results. Occasional manual scooping may be needed. |
| Litter is gathering at base of conveyor or behind conveyor | <ul style="list-style-type: none"> The bowl may be filled with too much litter. Make sure the bowl is not filled above the maximum litter level fill line. Use a scoop to redistribute litter or remove excess litter from the bowl. Make sure the waste guide is in the lowered position to help move waste up the conveyor. |
| Unit makes a grinding noise when bowl rotates | The unit may need cleaning (see "Cleaning" section). Make sure there is no stray litter between the litter bowl and the base of the litter box. |
| Conveyor is not moving waste into waste bin or is running backwards | <ul style="list-style-type: none"> Test the bowl to make sure it is rotating (see "Testing the Litter Box" section). Unplug the power adaptor from the wall and disconnect from the litter box. Wait 20 seconds, then securely reconnect the power adaptor and plug into a standard mains power outlet. If the problem continues, call our Customer Care Centre. |
| Motor seems to be overheating, clicking or making unusual sounds | Unplug the unit and call our Customer Care Centre. |
| Green indicator light is not on or the unit is not receiving power | <ul style="list-style-type: none"> Make sure adaptor is securely connected to unit and plugged into a standard mains power outlet. Make sure the litter guard is installed under conveyor and the conveyor cover and waste bin are installed correctly. There are safety features that require these pieces to be installed properly for the unit to operate (see "Start Here" section). |

Warranty

Two Year Non-Transferable Limited Warranty

This Product has the benefit of a limited manufacturer's warranty. Complete details of the warranty applicable to this Product and its terms can be found at www.petsafe.com and/or are available by contacting your local Customer Care Centre.

Europe

Radio Systems PetSafe Europe Ltd.
2nd Floor, Elgee Building, Market Square
Dundalk, Co. Louth, A91 YR9X Ireland

Canada

Radio Systems Corporation
10427 PetSafe Way
Knoxville, TN 37932 USA

Australia/New Zealand – In compliance with the Australian Consumer Law, Warranties Against Defects, effective January 1, 2012, warranty details of this Product are as follows: Radio Systems Australia Pty Ltd. (hereinafter referred to as "Radio Systems") warrants to the original retail purchaser, and not any other purchaser or subsequent owner, that its Product, when subject to normal and proper residential use, will be free from defects in material or workmanship for a period of two (2) years from the purchase date. An "original retail consumer purchaser" is a person or entity who originally purchases the Product, or a gift recipient of a new Product that is unopened and in its original packaging. When serviced by Radio Systems Customer Service, Radio Systems covers labour and parts for the first three years of ownership; after the first three years, a service or upgrade charge will apply relative to replacement of the Product with new or refurbished items at Radio Systems' sole discretion.

The limited warranty is non-transferable and shall automatically terminate if the original retail consumer purchaser resells the Radio Systems Product or transfers the property on which the Radio Systems Product is installed. This Limited Warranty excludes accidental damage due to dog chews; lightning damage; or neglect, alteration, and misuse. Consumers who purchase products outside of Australia, New Zealand, or from an unauthorised dealer will need to return the Product to the original place of purchase for any warranty issues.

Please note that Radio Systems does not provide refunds, replacements, or upgrades for change of mind, or for any other reason outside of these Warranty terms.

Claims Procedure: Any claim made under this Warranty should be made directly to Radio Systems Australia Pty Ltd. Customer Care Centre at:

Radio Systems Australia Pty Ltd.
PO Box 3442, Australia Fair
QLD 4215, Australia

Australia Residents: 1800 786 608
New Zealand Residents: 0800 543 054
Email: aus-info@petsafe.net

To file a claim, a proof of purchase must be provided. Without a proof of purchase, Radio Systems will not repair or replace faulty components. Radio Systems requests the Consumer to contact the Radio Systems Customer Care Centre to obtain a Warranty Return number, prior to sending the Product. Failure to do so may delay in the repair or replacement of the Product.

If the Product is deemed to be faulty within 30 days from date of original purchase, Radio Systems will organise for a replacement to be sent in advance of returning the faulty Product. A Post Bag will be included with the replacement Product for the return of the faulty Product. The Product must be returned within 7 days of receiving the replacement. If the Product is deemed to be faulty after 30 days from the date of original purchase, the consumer will be required to return the Product to Radio Systems at the consumer's own expense. Radio Systems will test and replace the faulty device or its components and return to the consumer free of charge, provided the Product is within its said warranty period. This warranty is in addition to other rights and remedies available to you under the law. Radio Systems goods come with guarantees that cannot be excluded under the Australia Consumer Law. You are entitled to a replacement or refund for a major failure and for compensation for any other reasonably foreseeable loss or damage. You are also entitled to have the goods repaired or replaced if the goods fail to be of acceptable quality and the failure does not amount to a major failure.

Should you have any queries or require any further information, please contact our Customer Care Centre on 1800 786 608 (Australia) or 0800 543 054 (New Zealand).



Important Recycling Advice

Please respect the Waste Electrical and Electronic Equipment regulations in your country. This equipment must be recycled. If you no longer require this equipment, do not place it in the normal municipal waste system. Please return it to where it was purchased in order that it can be placed in our recycling system. If this is not possible, please contact the Customer Care Centre for further information.

Compliance

CE

Radio Systems Corporation declares under its own responsibility, that the following product is in compliance with the essential requirements under the EMC Directive 2014/30/EU, and the RoHS Directive 2011/65/EU. Unauthorised changes or modifications to the equipment that are not approved by Radio Systems Corporation may violate EU EMC regulations, could void the user's authority to operate the equipment, and will void the warranty. Hereby, Radio Systems Corporation, declares that this product is in compliance with the essential requirements and other relevant provisions. The Declaration of Conformity can be found at: http://www.petsafe.com/customer-care/eu_docs.php.

IC

This device complies with Industry Canada license-exempt RSS standard(s). Operation is subject to the following two conditions: (1) this device may not cause interference, and (2) this device must accept any interference, including interference that may cause undesired operation of the device.

ACMA

This device complies with the applicable EMC requirements specified by the ACMA (Australian Communications and Media Authority).

Terms of Use and Limitation of Liability

1. Terms of Use

The use of this product is subject to your acceptance without modification of the terms, conditions and notices contained with this product. Use of this product implies acceptance of all such terms, conditions, and notices. If you do not wish to accept these terms, conditions, and notices, please return the Product, unused, in its original packaging and at your own cost and risk to the relevant Customer Care location together with proof of purchase for a full refund.

2. Proper Use

Proper Use includes, without limitation, reviewing the entire Product Manual and any specific safety information statements. The specific temperament or size/weight of your pet may not be suitable for this product. If you are unsure whether this Product is appropriate for your pet, please consult your veterinarian or certified trainer prior to use. For products used with pets where training is desired, Radio Systems Corporation recommends that these training products are not used if your pet is aggressive and accepts no liability for determining suitability in individual cases.

3. No Unlawful or Prohibited Use

This product is designed for use with pets only. This product is not intended to harm, injure or provoke. Using this product in a way that is not intended could result in violation of Federal, State or local laws.

4. Limitation of Liability

In no event shall Radio Systems Corporation or any of its associated companies be liable for (i) any direct, indirect, punitive, incidental, special or consequential damage and/or (ii) any loss or damages whatsoever arising out of or connected with the use or misuse of this product. The Purchaser assumes all risks and liability from the use of this product to the fullest extent permissible by law.

5. Modification of Terms and Conditions

Radio Systems Corporation reserves the right to change the terms, conditions and notices governing this product from time to time. If such changes have been notified to you prior to your use of this product, they shall be binding on you as if incorporated herein.

PetSafe™ products are designed to enhance the relationship between you and your pet.

Please visit www.petsafe.com to learn more about our extensive product range.

- Containment & Avoidance Systems
- Training Systems
- Bark Control
- Pet Doors
- Health & Wellness
- Waste Management
- Play & Challenge
- Travel, Access & Mobility

Les produits PetSafe™ sont conçus dans le but d'améliorer votre relation avec votre animal.

Visitez le site www.petsafe.com pour en savoir plus sur notre vaste gamme de produits.

- Systèmes de prévention et anti-fugue
- Systèmes de dressage
- Contrôle des aboiements
- Porte pour animaux
- Santé et bien-être
- Gestion des déjections
- Jeu et épreuve
- Déplacement, accès et mobilité

PetSafe™-producten zijn ontworpen om de relatie tussen u en uw huisdier te verbeteren.

Ga naar www.petsafe.com voor meer informatie over ons uitgebreide productassortiment.

- Systemen voor insluiting en vermijding
- Trainingssystemen
- Blafbeheersing
- Huisdierluiken
- Gezondheid & welzijn
- Afvalbeheersing
- Spel & uitdaging
- Vervoer, toegang & mobiliteit

Los productos PetSafe™ están diseñados para mejorar la relación entre usted y su mascota.

Para saber más acerca de nuestra amplia gama de productos, visite www.petsafe.com.

- Sistemas de contención y evasión
- Sistemas de adiestramiento
- Control de ladridos
- Puertas para mascotas
- Salud y bienestar
- Gestión de residuos
- Juego y reto
- Viajes, acceso y movilidad

I prodotti PetSafe™ sono progettati per migliorare la qualità della relazione tra voi e il vostro animale domestico.

Per saperne di più sull'estesa gamma dei nostri prodotti, si prega di visitare il nostro sito web: www.petsafe.com.

- Sistemi antifuga e di evitamento
- Soluzioni per l'addestramento
- Controllo dell'abbaiamento
- Porte per animali domestici
- Salute e benessere
- Gestione dei rifiuti
- Gioco e prova
- Viaggio, accesso e mobilità

PetSafe™ Produkte sind darauf ausgelegt, die Beziehung zwischen Ihnen und Ihrem Haustier zu verbessern.

Um mehr über unsere breite Produktpalette zu erfahren, besuchen Sie bitte www.petsafe.com.

- Kontroll- und Unterbindungssysteme
- Trainingssysteme
- Bellkontrolle
- Haustiertüren
- Gesundheit & Wohlbefinden
- Haustiertoiletten
- Sport und Spiel
- Reise, Zugang und Mobilität

Radio Systems Corporation
10427 PetSafe Way
Knoxville, TN 37932
+1 (865) 777-5404

Radio Systems PetSafe Europe Ltd.
2nd Floor, Elgee Building, Market Square
Dundalk, Co. Louth, A91 YR9X Ireland
+353 (0) 76 892 0427

Radio Systems Australia Pty Ltd.
PO Box 3442, Australia Fair
QLD 4215, Australia
+61 (0) 7 5556 3800

petsafe.com

SFE400-2330-19

©2018 Radio Systems Corporation