



Operating Guide
Manuel d'utilisation
Gebruiksaanwijzing
Manual de funcionamiento
Guida all'uso
Gebrauchsanweisung

PDT20-12471

250 m

Remote Trainer

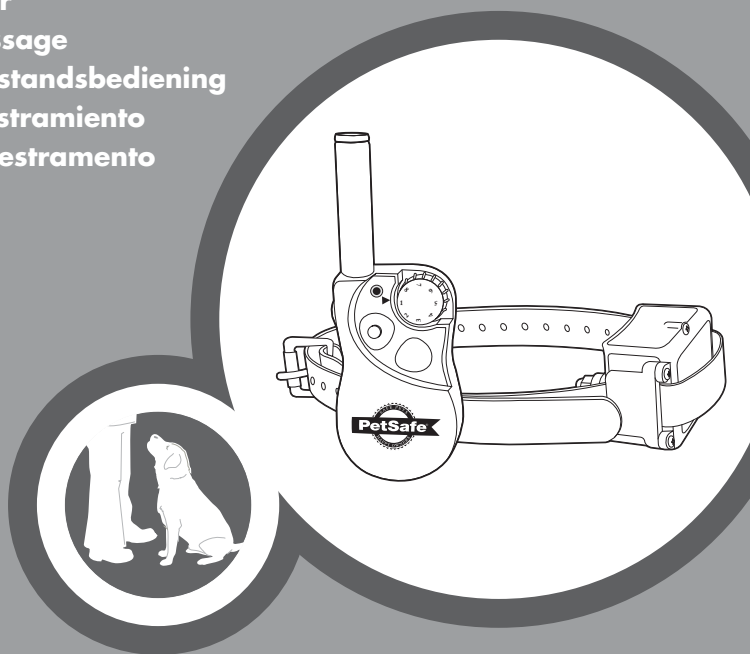
Collier de dressage

Trainer met afstandsbediening

Collar de adiestramiento

Collare di addestramento

Ferntrainer



Please read this entire guide before beginning
Veuillez lire ce manuel en entier avant de commencer
Gelieve deze gids volledig door te lezen voordat u begint
Por favor, este manual lea completo antes de empazar
Si prega di leggere attentamente la guida al uso prima di utilizzare il collare
Bitte lesen Sie die gesamte Betriebsanleitung vor dem Trainingsbeginn



Important Safety Information

Explanation of Attention Words and Symbols used in this guide

⚠ WARNING

WARNING indicates a hazardous situation which, if not avoided, could result in death or serious injury.

⚠ CAUTION

CAUTION, used with the safety alert symbol, indicates a hazardous situation which, if not avoided, could result in minor or moderate injury.

CAUTION

CAUTION, used without the safety alert symbol, indicates a hazardous situation which, if not avoided, could result in harm to your pet.

⚠ WARNING

Risk of explosion if battery is replaced by an incorrect type. Dispose of used batteries according to the instructions.

⚠ WARNING

Not for use with aggressive dogs. Do not use this product if your dog is aggressive, or if your dog is prone to aggressive behaviour. Aggressive dogs can cause severe injury and even death to their owner and others. If you are unsure whether this product is appropriate for your dog, please consult your veterinarian or a certified trainer.

CAUTION

Risk of skin damage. Please read and follow the instructions in this manual. Proper fit of the collar is important. A collar worn for too long, or made too tight on the pet's neck may cause skin damage. This is called bed sores; it is also called decubitus ulcers or pressure necrosis.

- Avoid leaving the collar on the dog for more than 12 hours per day.
- When possible reposition the collar on the pet's neck every 1 to 2 hours.
- Check the fit to prevent excessive pressure; follow the instructions in this manual.
- Never connect a lead to the electronic collar; it will cause excessive pressure on the contacts.
- When using a separate collar for a lead, don't put pressure on the electronic collar.
- Wash the dog's neck area and the contacts of the collar weekly with a damp cloth.
- Examine the contact area daily for signs of a rash or a sore.
- If a rash or sore is found, discontinue use of the collar until the skin has healed.
- If the condition persists beyond 48 hours, see your veterinarian.

For additional information on bed sores and pressure necrosis, please visit our website.

These steps will help keep your pet safe and comfortable. Millions of pets are comfortable while they wear stainless steel contacts. Some pets are sensitive to contact pressure. You may find after some time that your pet is very tolerant of the collar. If so, you may relax some of these precautions. It is important to continue daily checks of the contact area. If redness or sores are found, discontinue use until the skin has fully healed.



Thank you for choosing PetSafe®, the best selling brand of electronic training solutions in the world. Our mission is to be the most trusted brand in the pet ownership experience. We want to ensure your pet's safety by providing you with the tools and techniques to successfully train your pet. **If you have any questions, please contact the Customer Care Centre. For a listing of Customer Care Centre telephone numbers, visit our website at www.petsafe.net.**

To get the most protection out of your warranty, please register your product within 30 days at www.petsafe.net. By registering and keeping your receipt, you will enjoy the product's full warranty and should you ever need to call the Customer Care Centre, we will be able to help you faster. Most importantly, PetSafe® will never give or sell your valuable information to anyone. Complete warranty information is available online at www.petsafe.net.

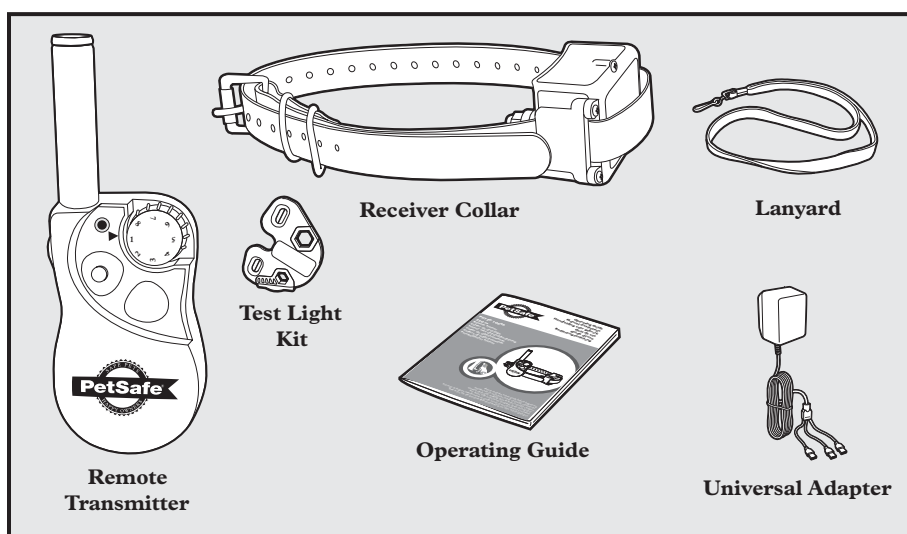
Table of Contents

| | |
|--|----|
| Components | 4 |
| How the System Works | 4 |
| Key Definitions | 5 |
| Operating Guide | |
| Prepare the Remote Transmitter | 6 |
| Prepare the Receiver Collar | 7 |
| Fit the Receiver Collar | 9 |
| Find the Best Stimulation Level for Your Pet | 10 |
| Program the Remote Transmitter..... | 11 |
| Reset the Receiver Collar | 12 |
| Program the Receiver Collar for Two or Three-Dog Operation | 12 |
| General Tips | 13 |
| Accessories..... | 13 |
| Frequently Asked Questions | 14 |
| Troubleshooting..... | 15 |
| Test Light Instructions | 16 |
| Battery Disposal..... | 16 |
| Compliance | 17 |
| Terms of Use and Limitation of Liability | 17 |
| Français | 19 |
| Nederlands | 36 |
| Español | 52 |
| Italiano | 69 |
| Deutsch | 85 |

Training Guide

Please visit our website at www.petsafe.net to download a detailed Training Guide for this unit or contact our Customer Care Centre, for further assistance. For a listing of telephone numbers in your area, visit our website at www.petsafe.net.

Components



How the System Works

The PetSafe® 250 m Remote Trainer has been proven safe, comfortable, and effective for all pets greater than 3.6 kg and at least 6 months old. This system assists you in controlling your pet without a lead in a range up to 250 metres. At the push of a button, the Remote Transmitter sends a signal, activating the Receiver Collar. Using the Remote Trainer consistently and correctly, many misbehaviours that your pet exhibits can be corrected or any basic obedience commands can be taught. PetSafe® Remote Trainers should not be used by persons under 16 years of age.

Important: The Remote Trainer has a range of up to 250 metres. Depending on the way you hold the Remote Transmitter, the maximum range may vary. For consistent results at longer ranges, hold the Remote Transmitter in a vertical position away from your body and above your head. Terrain, weather, vegetation, transmission from other radio devices, and other factors will affect the maximum range.



Key Definitions

Remote Transmitter: Transmits the radio signal to the Receiver Collar. It is waterproof.

Transmitter Indicator Light: Indicates that a button is pressed and also serves as a low-battery indicator.

Green LED: Indicates when tone is being delivered.

Red LED: Indicates when stimulation is being delivered and serves as a low battery indicator.

Intensity Dial: Provides multiple levels of Stimulation so you can match the correction to your pet's temperament.

Upper Button: This button is factory-set to deliver Tone for 1 second then Continuous Stimulation set by the Intensity Dial.

Lower Button: This button is factory-set to deliver Tone for 1 second then Continuous Stimulation two levels higher than Intensity Dial setting. *Note: This button will not deliver Stimulation higher than level 8. For example, if the Intensity Dial is set to 8, pushing the Lower Button will not deliver a higher level of Stimulation.*

Side Button: This button is factory-set to deliver an Audible Tone only.

Receiver Collar: Receives the radio signal from the Remote Transmitter. It is waterproof.

On/Off Button: Momentarily pressing and holding this button turns the Receiver Collar on and off.

Contact Points: The contacts through which the Receiver Collar delivers Stimulation.

Receiver Indicator Light: Indicates when the Receiver Collar has been turned on or off and also serves as a low-battery indicator.

Green LED: Indicates when tone is being delivered and serves as a good battery indicator.

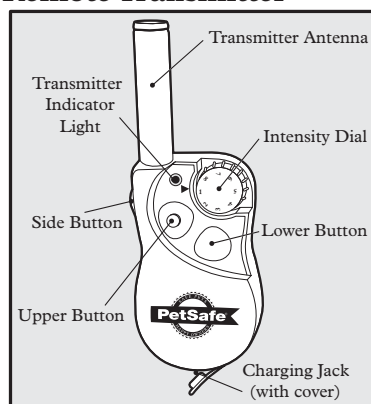
Red LED: Indicates when stimulation is being delivered and serves as a low battery indicator.

Charging Jacks: For connecting the charger. Although the Remote Transmitter and Receiver Collar are waterproof without the charger covers, keep the covers in place when not charging to keep debris out of the openings.

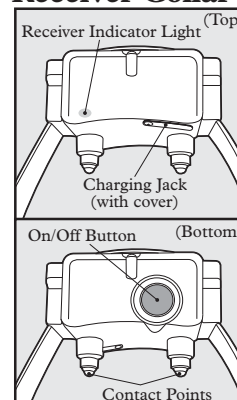
Continuous Stimulation: You control when and how long Stimulation is delivered to your dog through the Receiver Collar's Contact Points. When a Continuous Stimulation button is pressed for 8 seconds or more, the Remote Transmitter will "time-out." The button will need to be released and pressed again before additional Stimulation can be delivered.

Audible Tone: Use an Audible Tone with a Stimulation to stop unwanted behaviours. Timing is critical. The Audible Tone followed by the Stimulation should occur during or immediately after the unwanted behaviour. Once your dog associates the Audible Tone with the Stimulation, you will only need to use the Audible Tone.

Remote Transmitter



Receiver Collar

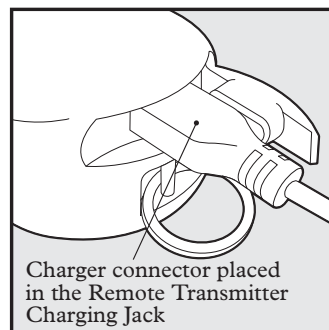


Operating Guide

Step 1 Prepare the Remote Transmitter

Charge the Remote Transmitter

1. Lift the rubber cover protecting the Remote Transmitter Charging Jack.
2. Connect one of the charger connectors to the Remote Transmitter Charging Jack.
3. Plug the charger into a standard wall outlet. The red light will appear.
4. Charge the Remote Transmitter for 24 hours for the first charge. Recharges take only 12 hours.
Note: The Transmitter Indicator Light is solid green after 12 hours of charging. For the first charge, continue to charge the Remote Transmitter for an additional 12 hours.
5. When charging is completed, replace the rubber cover.



Note: Approximate battery life between charges is 40 to 60 hours, depending on frequency of use.

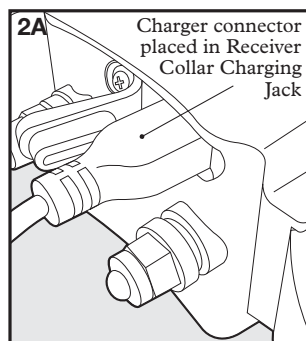
Transmitter Indicator Light - Function and Response

| Condition | Dual Colour LED | |
|--------------------------------|--|--|
| | RED LED | GREEN LED |
| Normal Operation | OFF | OFF |
| Normal Operation - Low Battery | Flashes 3 times every 5 seconds | OFF |
| Tone | OFF | ON length of Remote Transmitter button press |
| Correction | ON length of Remote Transmitter button press | OFF |
| Program Mode - Button Held | ON length of button press | OFF |
| Program Mode - Button Released | Flashes mode number | OFF |
| Charging | ON | OFF |
| Charging Complete | OFF | ON |

Step 2 Prepare the Receiver Collar

Charge the Receiver Collar

1. Lift the rubber cover protecting the Receiver Collar Charging Jack.
2. Connect one of the charger connectors to the Receiver Collar Charging Jack (2A).
3. Plug the charger into a standard wall outlet. The red light will appear.
4. Charge the Receiver Collar for 24 hours for the first charge. Recharges take only 12 hours.
Note: The Receiver Indicator Light is solid green after 12 hours of charging. For the first charge, continue to charge the Receiver Collar for an additional 12 hours.
5. When charging is completed, replace the rubber cover.

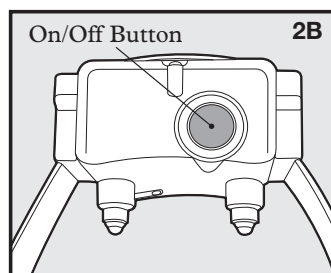


To Turn the Receiver Collar On:

1. Press and hold the On/Off Button (2B) until the Receiver Indicator Light comes on solid green and you hear the Receiver Collar beep from low to high.
2. Release the On/Off Button.

The Receiver Indicator Light flashes green once every 5 seconds to indicate the battery is good. This flashing green light also indicates the Receiver Collar is on and ready to receive a radio signal from the Remote Transmitter.

Note: If the Receiver Indicator Light flashes red 3 times every 5 seconds (instead of green), this indicates that the battery charge is low and the unit should be recharged before use.



To Turn the Receiver Collar Off:

1. Press and hold the On/Off Button until the Receiver Indicator Light comes on solid red and the Receiver Collar beeps high to low.
2. Release the On/Off Button.

To extend the life between charging cycles, turn the Receiver Collar off when it is not in use. Approximate battery life between charges is 15-20 hours, depending on frequency of use.

Receiver Indicator Light

| Condition | Dual Colour LED | | Speaker |
|------------------------------------|--|--|------------------------|
| | RED LED | GREEN LED | |
| Wakeup - Button Held < 5 seconds | OFF | ON length of button press | 1 second startup tone |
| Wakeup - Button Held >= 5 seconds | OFF | OFF | OFF |
| Program Mode/Reset Receiver Collar | OFF | OFF | OFF |
| Reset Successful | OFF | Flashes 5 times | Beeps 5 times |
| Normal Operation | OFF | Flashes once every 5 seconds | OFF |
| Normal Operation - Low Battery | Flashes 3 times every 5 seconds | OFF | OFF |
| Correction | ON length of Remote Transmitter button press | OFF | OFF |
| Tone | OFF | ON length of Remote Transmitter button press | Tone |
| Sleep - Button Held | ON length of button press | OFF | 1 second shutdown tone |
| Charging | ON | OFF | OFF |
| Charging Complete | OFF | ON | OFF |

Rechargeable Batteries

- The rechargeable Nickel Metal Hydride (NiMH) batteries are not memory sensitive and do not require depletion before charging.
- The batteries come partially charged from the factory, but will require a full charge (24 hours) before the first use.
- When storing the unit for long periods, remember to regularly give batteries a full charge (12 hours). This should be done once every 4 to 6 weeks.
- Excessive overcharging can shorten battery life. After initial charge, never leave the battery plugged in for more than 12 hours.
- If your equipment has not been charged for an extended period, you may experience a decrease in battery life the first few uses. Afterwards, the battery life will return to previous capacity levels.

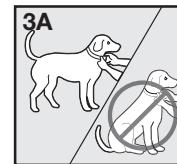
- You should expect hundreds of recharge cycles from your batteries. However, all rechargeable batteries lose capacity over time relative to the number of recharge cycles they experience. This is normal. If your operating time drops to half of the original life, contact the Customer Care Centre.

Step 3 Fit the Receiver Collar

Important: The proper fit and placement of your Receiver Collar is important for effective operation. The Contact Points must have direct contact with your dog's skin on the underside of his neck.

To assure a proper fit, please follow these steps:

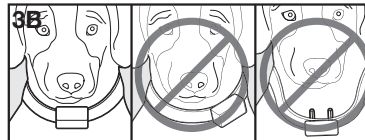
1. Make sure that the Receiver Collar is turned off.
2. Start with your dog standing comfortably (3A).
3. Place the Receiver Collar high on your dog's neck close to the ears. Centre the Contact Points underneath your dog's neck, touching the skin (3B).



CAUTION Risk of skin damage.

You may need to trim the hair in the area of the Contact Points. Never shave the dog's neck; this may lead to a rash or infection.

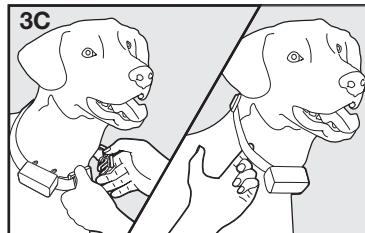
4. Check the tightness of the Receiver Collar by inserting one finger between the collar and your dog's neck (3C). The fit should be snug but not constricting.



CAUTION Risk of skin damage.

You should not make the collar any more tight than is required for good contact. A collar that is too tight will increase the risk of pressure necrosis in the contact area.

5. Allow your dog to wear the Receiver Collar for several minutes then recheck the fit. Check the fit again as your dog becomes more comfortable with the Receiver Collar.



Care and Cleaning

To ensure the effectiveness of this product and the comfort and safety of your dog, check the fit of his collar frequently. This Guide describes proper collar fitting. If you notice that your dog is experiencing skin irritation, discontinue use of the collar for a few days. If the condition persists beyond 48 hours, see your veterinarian.

To prevent skin irritation from occurring:

- The Receiver Collar should not be worn for more than 12 hours out of every 24-hour period.
- Your dog's neck and the Contact Points must be washed weekly with a damp cloth.
- Be sure that your pet's neck is thoroughly dry before placing the Receiver Collar back on his neck.

CAUTION Risk of skin damage.

- For comfort, safety and effectiveness of this product, please ensure that you check the fit of your pet's collar frequently. If any skin irritation is observed, discontinue the use of the collar for a few days. If the condition persists beyond 48 hours, see your veterinarian.
- Do not attach a lead to the collar. This can result in pulling the Contact Points too tightly against your pet's neck. Attach a lead to a separate, non-metallic collar or harness, making sure the extra collar does not put pressure on the Contact Points.

Step 4 Find the Best Stimulation Level for Your Pet

Important: Always start at the lowest level and work your way up.

The Remote Trainer has 8 different Stimulation Levels. This allows you to choose the Stimulation that is best for your pet.

Once you have placed the Receiver Collar on your pet, it is time to find the Stimulation Level that is best for him. This is called the Recognition Level.

A slight change in your pet's behaviour, such as looking around in curiosity, scratching at his collar, or flicking his ears, indicates the Recognition Level that is best for him.

Follow the steps below to find your pet's Recognition Level:

1. Starting at Level 1 on the Intensity Dial, press the Upper Button continuously for 1 to 2 seconds.
2. If your pet shows no reaction, repeat the Stimulation level several times before moving up to the next level.
3. **YOUR PET SHOULD NOT VOCALIZE OR PANIC WHEN RECEIVING STIMULATION. IF THIS HAPPENS, THE STIMULATION LEVEL IS TOO HIGH AND YOU NEED TO GO BACK TO THE PREVIOUS LEVEL AND REPEAT THE PROCESS.**
4. Move up through the Stimulation levels until your pet reliably responds to the Stimulation.
5. If your pet continues to show no response at Level 8, check the fit of the Receiver Collar. Then go back to step 1 and repeat the process. If this still does not yield any results, your pet's hair will need to be trimmed around the Contact Points.

If all of these steps have been done and your pet continues to show no reaction to the Stimulation, see the "Test Light Instructions" section.

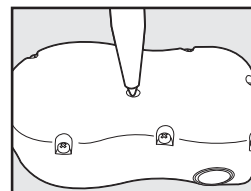
If after completing all of these steps your dog still does not indicate he is feeling the Stimulation, please contact Customer Care Centre or visit our website at www.petsafe.net.

Step 5 Program the Remote Transmitter

Note: The Transmitter is factory set to Mode 1. The Mode of the Remote Transmitter can be changed to fit your type or style of training.

To change the Mode:

1. Referring to the table below, adjust the Intensity Dial to the Mode you want to use.
2. Turn the Remote Transmitter over.
3. With a pen or paperclip, depress and release the Mode button. When the Mode button is pressed, the Transmitter Indicator Light will be solid red. When it is released, it will flash the Mode selected.



For example, if Mode 2 is desired, adjust the Intensity Dial to Level 2. Once the Mode button has been depressed, the Transmitter Indicator Light will be solid red and once the Mode button is released, the Transmitter Indicator Light will flash two times.

Note: Continuous Stimulation will transmit for no more than eight continuous seconds no matter how long the button is pressed. To reactivate, release and repress the button.

| Mode | UPPER BUTTON FUNCTION | LOWER BUTTON FUNCTION | SIDE BUTTON FUNCTION | # OF DOGS |
|------|--|---|---|-----------|
| 1 | Tone 1 Second then Continuous Stimulation set by Dial | Tone 1 Second then Continuous Stimulation 2 levels higher than Intensity Dial setting | Tone only | 1 |
| 2 | Tone 1 Second then Continuous Stimulation set by Dial | Continuous Stimulation set by Dial | Tone only | 1 |
| 3 | DOG #1 Tone only | DOG #2 Tone only | DOG #3 Tone only | 3 |
| 4 | DOG #1 Tone 1 Second then Continuous Stimulation set by Dial | DOG #2 Tone 1 Second then Continuous Stimulation set by Dial | DOG # 3 Tone 1 Second then Continuous Stimulation set by Dial | 3 |

Step 6 Reset the Receiver Collar

To reset the Receiver Collar to work with a new Remote Transmitter or to reprogram a new Receiver Collar to work with your existing Remote Transmitter:

1. Turn the Receiver Collar off.
2. Press and hold the On/Off Button until the Receiver Indicator Light comes on solid green and the Receiver Collar beeps 5 times.
3. Continue to hold the On/Off button until the Receiver Indicator Light has turned off.
4. Press and hold the Upper Button on the Remote Transmitter until the Receiver Indicator Light flashes 5 times and beeps 5 times. You may need to hold both units 0.5-1 m from each other before this occurs. Once the Receiver Indicator Light has flashed 5 times, the Receiver Collar has been reset. If the Receiver Indicator Light does not flash 5 times, start again and repeat the process.

Step 7 Program the Receiver Collar for Two or Three-Dog Operation

With the Transmitter set to Mode 3 or 4, PetSafe® Receiver Collars can be set to respond to the upper, lower, or side Remote Transmitter buttons. Add-A-Dog® receiver(s) must be purchased to train additional dogs.

1. Program the Remote Transmitter to Mode 3 or 4.
2. Program the first Receiver Collar.
 - A. Turn the Receiver Collar off.
 - B. Press and hold the On/Off Button. The Receiver Indicator Light will come on, then turn off in 4-5 seconds. If the On/Off Button is released too early, the Receiver Indicator Light will begin its normal flashing. If this occurs, start over and repeat the process.
 - C. After the Receiver Indicator Light has turned off, release the On/Off Button.
 - D. Press and hold the **Upper Button** on the Remote Transmitter until the Receiver Indicator Light flashes 5 times. You may need to hold both units 0.5-1 m from each other. If the Receiver Indicator Light does not flash 5 times, start over and repeat the process.
3. Program the second Receiver Collar using A. through D. above, but using the **Lower Button** in place of the Upper Button.
4. Program the third Receiver Collar using A. through D. above, but using the **Side Button** in place of the Upper Button.

General Tips

Training Instructions

- Eliminate one misbehaviour or teach one obedience command at a time. If you move too fast with the training, your pet may become confused.
- Be consistent. Give your pet a tone or Stimulation with each misbehaviour.
- Do not over-correct your pet. Use as few Stimulations as possible to train your pet.
- Unless you can supervise him, it is recommended that you restrict your pet from situations in which he has a history of misbehaving. However, setting up a situation as a training session can dramatically improve your chances of success.
- If your pet reacts to the training by hiding or acting fearful, redirect his attention to a simple and appropriate behaviour such as the “Sit” command.
- The Lower Button can be used to deliver a slightly higher level of Stimulation on occasions when your pet ignores his Recognition Level. Using this button is a quicker alternative to adjusting the Intensity Dial. *Note: This function only applies if the Remote Transmitter is programmed in Mode 1.*
- The objective is to train your pet to respond to your spoken command and the Audible Tone from the receiver in normal circumstances. After proper training, the use of Stimulation should only be necessary if your pet repeats unwanted behaviour.

Accessories

To purchase additional accessories for your PetSafe® 250 m Remote Trainer, contact the Customer Care Centre or visit our website at www.petsafe.net to locate a retailer near you. For a listing of Customer Care Centre telephone numbers, visit our website at www.petsafe.net.

| Component | Part Number |
|--|-------------|
| 250 m Remote Trainer Add-A-Dog® | PDT19-12484 |
| Replacement Black Collar | RFA-162-1 |
| Replacement Green Collar | RFA-162-6 |
| Replacement Red Collar | RFA-162-3 |
| Replacement Lanyard | RFA-189 |
| Accessory Pack (Long probes, charge port plugs and screws) | RFA-283 |
| Universal Adaptor | SDT00-12304 |
| Replacement Battery - Transmitter | 650-059 |
| Replacement Battery - Receiver Collar | 650-058 |

Frequently Asked Questions

| | |
|---|---|
| Is the Stimulation safe for my pet? | While the Stimulation is unpleasant, it is harmless to your pet. Electronic training devices require interaction and training from the owner to achieve desired results. |
| How old does a pet have to be before using the 250 m Remote Trainer? | The system should only be used with pets who are over 6 months of age. If your pet is injured or its mobility is otherwise impaired, contact your veterinarian or professional trainer before use. Your pet should be able to learn basic obedience commands such as "Sit" or "Stay." The Receiver Collar may be too large for dogs under 3.6 kg. |
| Once my pet is trained and has been obeying my commands, will he have to continue to wear the Receiver Collar? | Probably not. He may need to wear the Receiver Collar from time to time for reinforcement. |
| Is the Receiver Collar waterproof? | Yes. If the rechargeable battery pack ever needs to be replaced, make sure the o-ring and o-ring groove are free from dirt and debris. |
| Can I use the 250 m Remote Trainer with more than one pet? | Yes, Add-A-Dog® Receiver Collars must be purchased and the Remote Transmitter must be changed to Mode 3 or 4. |
| Will I get exactly 250 m of range with the 250 m Remote Trainer? | The range you get with your 250 m Remote Trainer will vary according to terrain, weather, vegetation, as well as transmission from other radio devices. To get the maximum amount of range, please refer to "How the System Works" section of this guide. |
| How long can I continuously deliver Stimulation to my pet? | The maximum amount of time you can press the Continuous Stimulation Button and deliver Stimulation to your pet continuously is 8 seconds. After eight seconds, the Remote Transmitter will time-out, and the Continuous Stimulation Button must be released and pressed again. |
| What do I do if my pet's neck becomes red and irritated? | This condition is due to the Contact Points irritating the skin. Discontinue use of the Receiver Collar for a few days. If the condition persists beyond 48 hours, see your veterinarian. Once the skin returns to normal, replace Receiver Collar, and monitor the skin condition closely. |

Troubleshooting

The answers to these questions should help you solve any problem you have with this system. If they do not, please contact the Customer Care Centre or visit our website at www.petsafe.net.

My pet is not responding when I press a button.

- Check to see if the Receiver Collar has been turned on.
- If your range has reduced from the first time you have used it, please check to see if the battery is low in either the Remote Transmitter or Receiver Collar.
- Many factors can impact the range you have with the 250 m Remote Trainer. For a list of these factors, please refer to “How the System Works.”
- You can verify the Receiver Collar is delivering Stimulation to your pet by placing the Test Light, enclosed in your kit, on the Receiver Collar. Please refer to the “Test Light Instructions” section for details.
- Increase the Intensity Dial. Refer to “Find the Best Stimulation Level For Your Pet” for more information.
- Make sure the Receiver Collar’s Contact Points are placed snugly against your pet’s skin. Refer to “Fit the Receiver Collar” for more information.
- If you notice your operating time dropping to about half the original time, your Receiver Collar battery needs to be replaced. Contact the Customer Care Centre to purchase a new one.

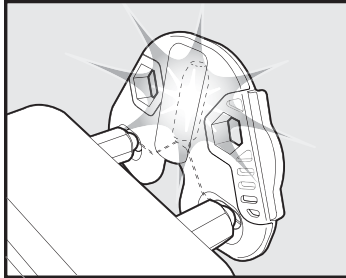
The Receiver Collar will not turn on.

- Make sure the Receiver Collar has been charged. For the initial charge, be sure to charge it for 24 hours. Subsequent charges only take 12 hours.

The Receiver Collar is not responding to the Remote Transmitter.

- Verify the Receiver Collar has been turned on. Refer to “Turning the Receiver Collar On and Off.”
- Refer to “Reset the Receiver Collar.”

Test Light Instructions



1. Turn the Receiver Collar on.
2. Hold the Test Light Contacts to the Contact Points.
3. Press a Stimulation Button on the Remote Transmitter.
4. The Test Light will flash.

Note: At higher Stimulation Levels, the Test Light will flash brighter.

5. Turn the Receiver Collar off.
- Save the Test Light for future testing.

Note: If the Test Light does not flash, recharge the battery and re-test. If Test Light still does not flash, contact the Customer Care Centre or visit our website at www.petsafe.net.

Important: The Test Light Tool can be used to tighten the Contact Points. This Receiver Collar has special waterproof Contact Points that will crack if they are over-tightened. If your Contact Points ever become loose, do not turn them any more than one-quarter turn beyond finger tight.



Battery Disposal

Separate collection of spent batteries is required in many regions; check the regulations in your area before discarding spent batteries. The Remote Transmitter operates on one battery of the type Nickel Metal Hydride (NiMH) with a 7.2 Volt, 160 mAh capacity. The Receiver Collar operates on one battery of the type NiMH with a 4.8 Volt, 120 mAh capacity.

At end of product life, use these battery removal instructions for final disposal of the battery pack.

- Using a number 1 Phillips screwdriver, remove the case screws.
- Remove the case back or cover.
- Remove the old battery pack.

Note: When removing the old battery pack, care must be taken when gripping the connector firmly to avoid damaging the wires. Shorting the battery wires may cause fire or explosion. These instructions are not valid for repair or battery replacement. Replacing the battery with a battery not specifically approved by Radio Systems Corporation® may cause fire or explosion. Please contact the Customer Care Centre to avoid voiding your warranty. For a listing of Customer Care Centre telephone numbers, visit our web site at www.petsafe.net.

⚠ WARNING RISK OF EXPLOSION IF BATTERY IS REPLACED BY AN INCORRECT TYPE. DISPOSE OF USED BATTERIES ACCORDING TO THE INSTRUCTIONS.



Important Recycling Advice

Please respect the Waste Electrical and Electronic Equipment regulations in your country. This equipment must be recycled. If you no longer require this equipment, do not place it in the normal municipal waste system. Please return it to where it was purchased in order that it can be placed in our recycling system. If this is not possible, please contact the Customer Care Centre for further information.

CE Compliance

This equipment has been tested and found to comply with relevant EU Electromagnetic Compatibility, Low Voltage and R&TTE Directives. Before using this equipment outside the EU countries, check with the relevant local R&TTE authority. Unauthorised changes or modifications to the equipment that are not approved by Radio Systems Corporation® are in violation of EU R&TTE regulations, could void the user's authority to operate the equipment, and void the warranty.

This product is in compliance with the provisions of the EMC and LV directives. The Declaration of Conformity can be found at: http://www.petsafe.net/customer-care/eu_docs.php.

Canada

Radio Standards Specifications (RSS)

The frequency of operation for this device is 27.145 MHz. The field strength is 10mV/m @ 3m. Operation is subject to the following two conditions: (1) this device may not cause interference, and (2) this device must accept any interference, including interference that may cause undesired operation of the device.

This unit is in compliance with the limits found in RSS-310.

This Class B digital apparatus complies with Canadian ICES-003.

Australia

This device complies with the applicable EMC requirements specified by the ACMA (Australian Communications and Media Authority).

Terms of Use and Limitation of Liability

1. Terms of Use

Use of this Product is subject to your acceptance without modification of the terms, conditions and notices contained herein. Use of this Product implies acceptance of all such terms, conditions and notices. If you do not wish to accept these terms, conditions, and notices, please return the Product, unused, in its original packaging and at your own cost and risk to the relevant Customer Care Centre together with proof of purchase for a full refund.

2. Proper Use

This Product is designed for use with pets where training is desired. The specific temperament or size/weight of your pet may not be suitable for this Product (please refer to "How the System Works" in this Operating Guide). Radio Systems Corporation® recommends that this Product is not used if your pet is aggressive and accepts no liability for determining suitability in individual

cases. If you are unsure whether this Product is appropriate for your pet, please consult your veterinarian or certified trainer prior to use. Proper use includes, without limitation, reviewing the entire Operating Guide and any specific Caution statements.

3. No Unlawful or Prohibited Use

This Product is designed for use with pets only. This pet training device is not intended to harm, injure or provoke. Using this Product in a way that is not intended could result in violation of Federal, State or local laws.

4. Limitation of Liability

In no event shall Radio Systems Corporation® or any of its associated companies be liable for (i) any indirect, punitive, incidental, special or consequential damage and/or (ii) any loss or damages whatsoever arising out of or connected with the misuse of this Product. The Purchaser assumes all risks and liability from the use of this Product to the fullest extent permissible by law. For the avoidance of doubt, nothing in this clause 4 shall limit Radio Systems Corporation®'s liability for human death or personal injury or fraud or fraudulent misrepresentation.

5. Modification of Terms and Conditions

Radio Systems Corporation® reserves the right to change the terms, conditions and notices governing this Product from time to time. If such changes have been notified to you prior to your use of this Product, they shall be binding on you as if incorporated herein.



Radio Systems® Corporation
10427 Electric Avenue
Knoxville, TN 37932 USA
(865) 777-5404
www.petsafe.net
400-1158-19

©2010 Radio Systems® Corporation