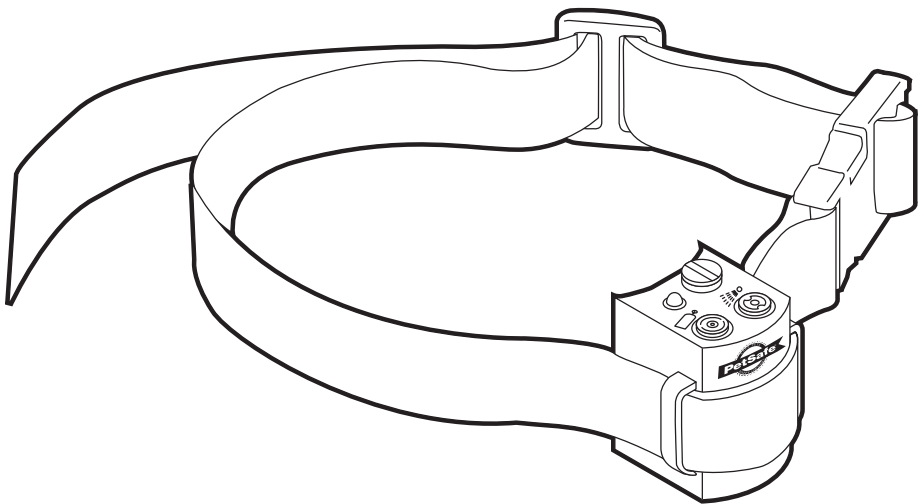


PetSafe® Spray Bark Control Collar Operating Guide

Please read this entire guide before beginning



Thank you for choosing PetSafe®, the #1 selling brand of electronic training solutions in the world. Our mission is to ensure your pet's safety by providing you the tools and techniques to successfully train your pet. If you have any questions, please contact the Customer Care Center at 1-800-732-2677 or visit our website at www.petsafe.net.

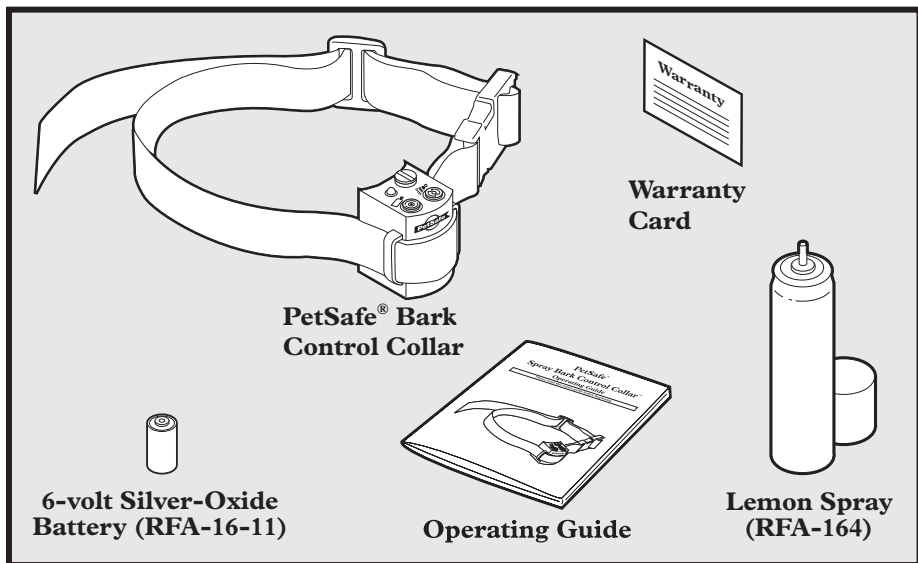
Table of Contents

Components	3
Features	3
How the PetSafe® Spray Bark Control Collar Works	4
Key Definitions	4
Fit the Bark Control Collar	5
Ensure a Proper Spray Pattern	6
To Insert and Remove the Battery	6
Modes of Operation	7
To Fill and Refill the Lemon Spray	8
What to Expect During Use of the Bark Control Collar	8
Regular Maintenance	9
To Test the Spray Bark Control Collar	9
Accessories	9
Frequently Asked Questions	10
Troubleshooting	11
Terms of Use and Limitation of Liability	12

“In a Tuskegee University study of adult shelter dogs wearing the PetSafe® Spray Bark Control Collar for six 30-minute sessions over two weeks, we detected no long-term adverse effects, and all dogs dramatically reduced their barking by the second day.”

Dr. Janet Steiss and Dr. Caroline B. Schaffer
Tuskegee University

Components



Features

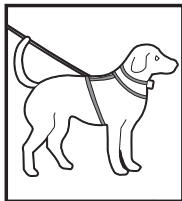
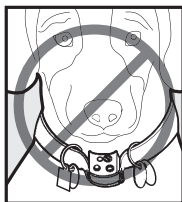
- For dogs of all sizes
- All-natural lemon scent is safe and effective
- Cannot be set off by another dog's bark
- Waterproof
- Low battery indicator
- Low spray indicator
- On / Off switch
- Emits up to 80 sprays per refill, over twice the amount of any other brand
- Lifetime Limited Warranty

How the PetSafe® Spray Bark Control Collar Works

The PetSafe® Spray Bark Control Collar effectively and humanely stops barking when it is worn. When the vibration of your dog's bark triggers the Sensor Probe, a burst of lemon-scented spray is emitted to deter the barking.

Important:

- **DO NOT use the Bark Control Collar with any additional collars, tags, leashes or other items that may cause vibration and trigger a false correction.**
- **Your dog may wear a harness for attaching a leash and/or tags while using the Bark Control Collar.**
- **Before playing with your dog, turn the unit off or remove the Bark Control Collar. The activity may cause your dog to bark, which could lead to him associating the play with the burst of spray.**
- **Never leave the Bark Control Collar on for more than 8 consecutive hours.**



Key Definitions

Indicator Light: Indicates that the Bark Control Collar is functioning properly, and when the spray needs to be refilled.

Sensor Probe: Detects the vibrations of your dog's bark.

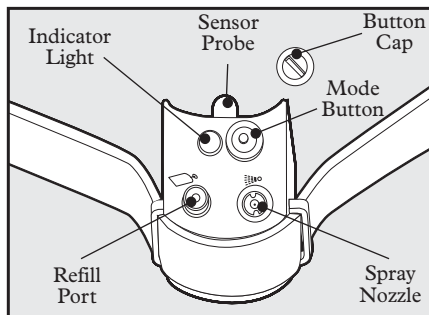
Note: The Sensor Probe is not adjustable.

Button Cap: Protects the Mode Button.

Mode Button: Turns the collar on and off, and resets the spray counter.

Refill Port: Where the spray is refilled.

Spray Nozzle: Where the spray ejects when your dog's bark is detected.

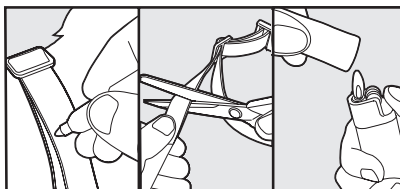
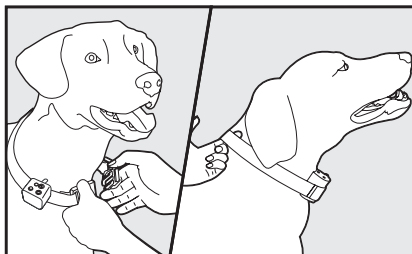
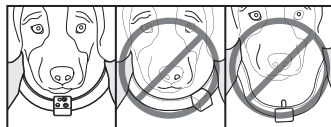
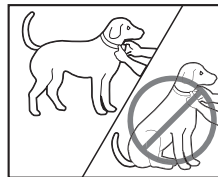


Fit the Bark Control Collar

Important: The proper fit and placement of your Bark Control Collar is important for effective operation.

To assure a proper fit, please follow these steps:

1. Make sure that the battery is not installed in the Bark Control Collar.
2. Start with your dog standing comfortably.
3. Place the Bark Control Collar high on your dog's neck close to the ears. Center the Sensor Probe underneath your dog's neck, touching the skin.
4. Check the tightness of the Bark Control Collar by inserting one finger between the collar and the back of the dog's neck. The fit should be snug but not constricting.
5. Allow your dog to wear the Bark Control Collar for several minutes, then recheck the fit. Check the fit again as your dog becomes more comfortable with the Bark Control Collar.
6. Trim the collar as follows:
 - a. Mark the desired length of the Bark Control Collar with a pen. Allow for growth if your dog is young or grows a thick winter coat.
 - b. Remove the Bark Control Collar from your dog and cut off the excess.
 - c. Before placing the Bark Control Collar back onto your dog, seal the edge of the cut collar by applying a flame along the frayed edge.

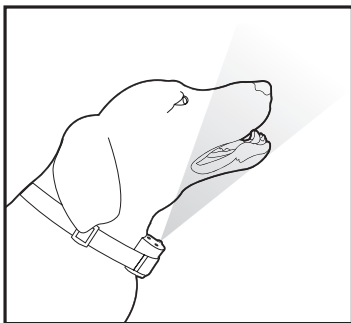


Important: The Receiver Collar should not be worn for more than 8 hours out of every 24-hour period.

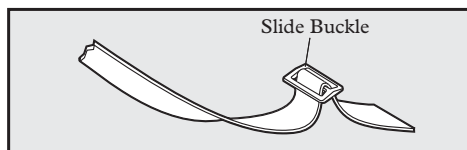
Ensure a Proper Spray Pattern

For the PetSafe® Spray Bark Control Collar™ to perform properly, the nozzle must be positioned correctly and there must be a clear path from the Spray Nozzle to your dog's snout. Follow these steps:

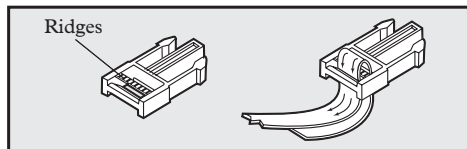
1. Make sure the PetSafe® logo on the front of the unit is upright and the Spray Nozzle is pointing up towards the dog's snout.
2. Make sure the unit is located on your dog's neck so the nozzle is angled out and pointing towards the front of the snout.
3. For long-haired dogs, it may be necessary to trim the neck hairs along the path of the spray. It is important that the spray reaches the dog's snout to be effective.



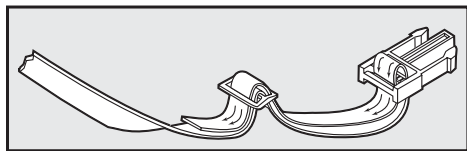
To Re-Thread the Collar



The slide buckle prevents the collar from becoming loose around your pet's neck.



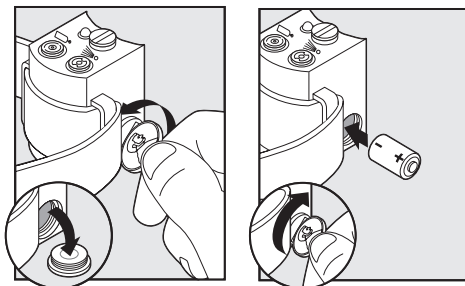
The ridges must be facing up; the collar will slip if it is not properly threaded.



To Insert and Remove the Battery

Note: Do not install the battery while the Bark Control Collar is on your dog.

A replacement PetSafe® battery (RFA-16-11) can be found at many retailers. Contact the Customer Care Center at 1-800-732-2677 or visit our web site at www.petsafe.net to locate a retailer near you.

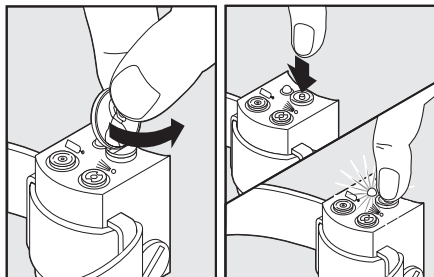


Battery Life

Average battery life is 2 to 4 months, depending on how often your dog barks. However, due to greater use during your dog's training, your first battery may not last as long as replacement batteries.

Modes of Operation

- To activate the unit, first remove the Button Cap. Press the Mode Button until the Indicator Light comes on and release. The Indicator Light will flash once every 5 seconds.
- To turn the unit off, press the Mode Button and hold until the Indicator Light flashes 4 times.
- Always replace the Button Cap.



Function and Response Table

Indicator Light Response	Function
Flashes once every 5 seconds	Normal Operation
Stops flashing	Low Battery
Flashes 5 times rapidly every 5 seconds	Low Spray

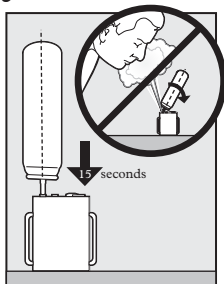
To Fill and Refill the Lemon Spray

- Remove the collar from your dog.
- Turn the unit off.
- Hold the Lemon Spray can upright and firmly press the nozzle down into the Refill Port. Hold for 15 seconds and remove.

Note: If spray leaks out, you may need to press harder to complete the seal.

- Turn the unit on.

Important: To reset the Spray Counter, press the Mode Button until the Indicator Light comes on, and release the button. The Indicator Light will resume to 1 flash every 5 seconds.



What to Expect During Use of the Bark Control Collar

Important: Do not leave your dog alone the first few times he wears the Bark Control Collar.

Place the Bark Control Collar properly on your dog and wait nearby until he barks. Most dogs will understand very quickly that the Bark Control Collar is disrupting their urge to bark and will relax and stop barking. Because the burst of Lemon Spray from the Bark Control Collar may be surprising or startling at first, some dogs may bark more at the initial correction.

On rare occasions, a dog may get into a bark-spray-bark-spray cycle. If this happens, reassure your dog with calm, soothing tones. As your dog relaxes, he will understand that if he becomes quiet, he will not receive any more spray bursts. The small minority of dogs that have this reaction will only have it the first time they wear the Bark Control Collar.

You should notice a reduction in your dog's barking within the first couple of days that he wears the Bark Control Collar. At this point, it is important to remember the learning process is still not complete. Dogs will "test" this new learning experience and will increase their attempts to bark. This usually occurs during the second week a dog wears the Bark Control Collar. If this does occur, remain consistent and do not alter your use of the Bark Control Collar. You must place the Bark Control Collar on your dog in every situation when you

expect him to be quiet. If your dog is not wearing the Bark Control Collar, he may resume barking and his learning would suffer a setback.

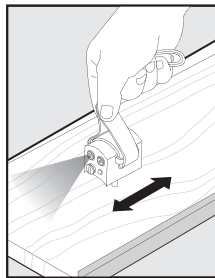
Regular Maintenance

- For comfort, safety, and effectiveness of this product, please ensure that you check the fit of your pet's collar frequently.
- The Receiver Collar should not be worn for more than 8 hours out of every 24-hour period to prevent irritation. If any skin irritation is observed, discontinue the use of the collar for a few days. If the condition persists beyond 48 hours, see your veterinarian.
- The spray from the Bark Control Collar may stick to the hair under your dog's snout. Clean your dog's hair weekly with a washcloth and a mild hand soap. Rinse and dry your dog's neck thoroughly.
- If the spray accumulates on the Bark Control Collar, wipe the receiver clean with a damp cloth and dry thoroughly.

To Test the Spray Bark Control Collar

Slide the Sensor Probe across a rough surface for at least 10 inches. The Bark Control Collar should spray. If your Bark Control Collar doesn't spray during this test, see "The Bark Control Collar does not spray" in the "Troubleshooting" section, and continue with the second step.

Note: Allow space for spray burst when testing.



Accessories

To purchase additional accessories for your PetSafe Bark Control Collar, contact the Customer Care Center at 1-800-732-2677 or visit our website at www.petsafe.net to locate a retailer near you.

Component	Part Number
Battery - one pack	RFA-16-11
Replacement Collar	RFA-130
Lemon Spray Canister (MSDS sheet available upon request)	RFA-164

Frequently Asked Questions

Will my dog stop barking completely?	<ul style="list-style-type: none">• The Bark Control Collar effectively and humanely stops all barking when it is worn. It should only be worn during periods of unwanted barking.
Will another dog's bark set off the Bark Control Collar?	<ul style="list-style-type: none">• No.
Is the Bark Control Collar safe and humane?	<ul style="list-style-type: none">• Yes. The Bark Control Collar is designed to get your dog's attention, not to punish him.
Will the Bark Control Collar work for my dog?	<ul style="list-style-type: none">• The Bark Control Collar is safe and effective for all breeds and sizes of dogs, though it may be too large for small breeds to wear comfortably.
Is the spray harmful?	<ul style="list-style-type: none">• The lemon spray uses a lemon fragrance that dogs find unpleasant. It dissipates quickly and is safe for humans and pets.
Will this work with long-haired dogs?	<ul style="list-style-type: none">• Yes. It may be necessary to trim the hair on your dog's neck so it does not block the spray from reaching his snout.
Does the spray need to hit my dog's nose?	<ul style="list-style-type: none">• No. The spray is very fine and simply creates a mist in the region of the snout.
Will this work with all dogs?	<ul style="list-style-type: none">• This product is not recommended for dogs with high drive. We recommend trying the PetSafe Deluxe Bark Control Collar™ with Static Correction.

Troubleshooting

The Bark Control Collar does not spray.	<ul style="list-style-type: none">• Test the Bark Control Collar (see “To Test the Bark Control Collar” section).• If your Bark Control Collar does not spray during this test, try the same test on a rougher surface.• Ensure that the battery is properly installed.• Replace the battery.• Refill the Lemon Spray.• If the Bark Control Collar still does not spray, contact the Customer Care Center at 1-800-732-2677.
My Bark Control Collar sprays, but my dog keeps barking (does not respond to the burst of spray).	<ul style="list-style-type: none">• Tighten the Bark Control Collar and make sure the Sensor Probe is centered on the front of the dog’s neck.• Check to make sure the Spray Nozzle points towards the dog’s nose.• Make sure your dog’s hair does not block the spray. If so, trim the hair so the spray can reach the snout area.• If your dog still does not respond, contact the Customer Care Center at 1-800-732-2677.
When I try to refill the Lemon Spray, the spray leaks out around the Spray Nozzle.	<ul style="list-style-type: none">• Hold the Lemon Spray can upright. If it is held at an angle, it will not create a good seal.• Press firmly on the Lemon Spray can to create a good seal.• If the spray continues to leak, contact the Customer Care Center at 1-800-732-2677.

Terms of Use and Limitation of Liability

1. Terms of Use

This Product is offered to you conditioned upon your acceptance without modification of the terms, conditions and notices contained herein. Usage of this Product implies acceptance of all such terms, conditions, and notices.

2. Proper Use

This Product is designed for use with pets where training is desired. The specific temperament of your pet may not work with this Product. We recommend that you not use this Product if your pet is less than 8 pounds or if your pet is aggressive. If you are unsure whether this is appropriate for your pet please consult your veterinarian or certified trainer.

Proper use includes reviewing the entire Guide provided with your Product and any specific Caution statements.

3. No Unlawful or Prohibited Use

This Product is designed for use with pets only. This pet training device is not intended to harm, injure or provoke. Using this Product in a way that is not intended could result in violation of Federal, State or local laws.

4. Limitation of Liability

In no event shall Radio Systems Corporation be liable for any direct, indirect, punitive, incidental, special or consequential damages, or any damages whatsoever arising out of or connected with the use or misuse of this Product. Buyer assumes all risks and liability from the use of this Product.

5. Modification of Terms and Conditions

Radio Systems Corporation reserves the right to change the terms, conditions and notices under which this Product is offered.

Radio Systems Corporation
10427 Electric Avenue
Knoxville, TN 37932
1-800-732-2677
www.petsafe.net
400-637